



Georgia World  
Congress Center  
Authority

# BOARD OF GOVERNORS MEETING

**April 26, 2022**

## Approval of Minutes March 29, 2022

FINANCIAL

# Financial Update

---

**Janet Arsenault**  
**Sr. Director of Finance**

# Financial Snapshot: March 2022

FINANCIAL



Month	Budget	Actual	Variance
<b>Revenue</b>	<b>\$5,417,272</b>	<b>\$6,338,721</b>	<b>↑ \$921K 17%</b>
<b>Expense</b>	<b>\$3,195,393</b>	<b>\$3,227,993</b>	<b>↑ \$33K 1%</b>
<b>Net Profit</b>	<b>\$2,221,879</b>	<b>\$3,110,728</b>	<b>↑ \$889K</b>

# FY22 Financial Snapshot: YTD thru March 2022

FINANCIAL



Month	Budget	Actual	Variance
<b>Revenue</b>	<b>\$30,751,173</b>	<b>\$36,317,975</b>	<b>↑ \$5.6M 18.1%</b>
<b>Expense</b>	<b>\$31,165,832</b>	<b>\$28,744,637</b>	<b>↓ \$2.4M 7.8%</b>
<b>Net Profit/ (Loss)</b>	<b>(\$414,659)</b>	<b>\$7,573,338</b>	<b>↑ \$8.0M</b>



Georgia World Congress Center



CENTENNIAL OLYMPIC PARK

## Year-End Profit

<b>Budget</b>	<b>\$71,397</b>
<b>Projection</b>	<b>\$7,397,602</b>

Questions?

AUTHORITY

# **Signia by Hilton Atlanta: Design Narrative**

**Cristi Moore**  
**Design Director, Gensler**

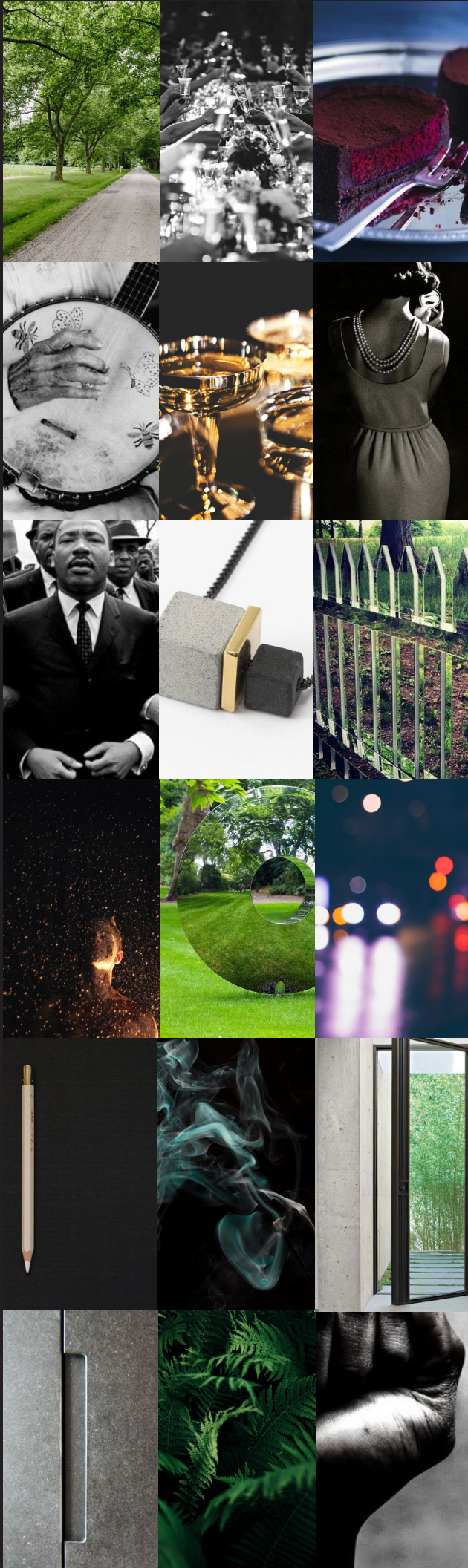


GEORGIA WORLD CONGRESS CENTER HOTEL

*signia by hilton*

ATLANTA? I THINK IT'S THE GREATEST CITY  
ANYWHERE I KNOW OF.  
IVAN ALLEN JR.

DESIGN DRIVERS



RADICAL HOSPITALITY

*Inviting · Inclusive · Indulgent*

REIMAGINED TRADITION

*authentic · elevated · timeless*

SUBTLE SOPHISTICATION

*confident · stylish · refined*

URBAN OASIS

*alive · innovative · vibrant*

REINVENTION DEFINED

*functional · flexible · adaptable*

UNDERSTATED MODERN

*simple · refreshing · catalyst*



# Signia by Hilton

ATLANTA, GEORGIA  
873,000 SF<sup>2</sup>  
LIFESTYLE UNBUILT

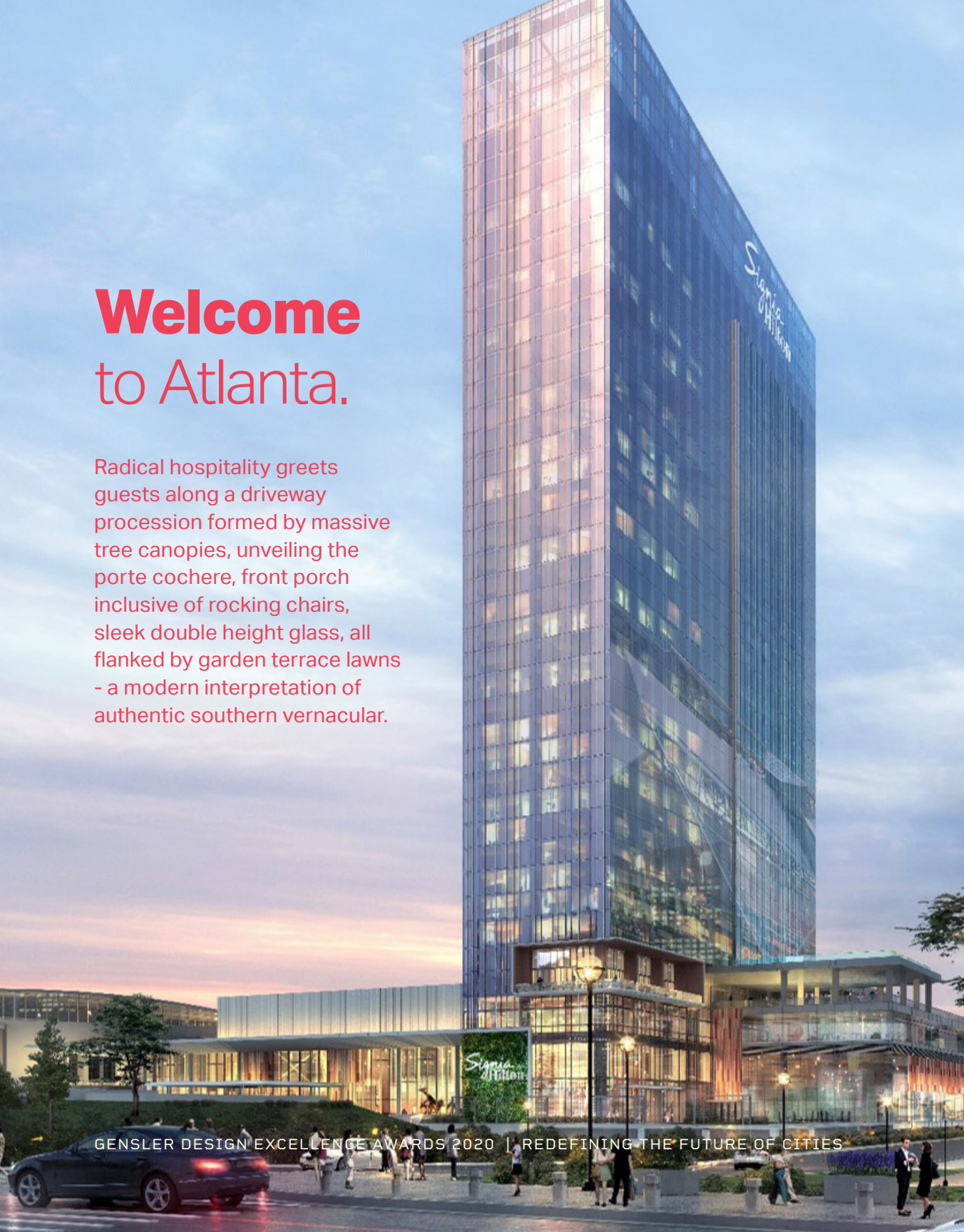
## GROUNDLED. THRIVING. CULTIVATING A LEGACY.

With a foundation rooted deeply in the south, Signia by Hilton celebrates Atlanta's past, present, and constantly shifting landscape to cultivate a legacy. Drawing the world 24/7/365, our charm and gracious efforts creating an authentic culture of Southern Hospitality, we welcome you not only into our city, but directly into our home. Drawing your senses to PIVOT SOUTH.

The new 33 story hotel tower on a 4 story podium and 975 key convention hotel will become a central connection point to the existing Georgia World Congress Center (GWCC); strengthening the city's position as a national premier destination for sports, entertainment, and convention markets. Sitting on the former Georgia Dome site, Signia by Hilton will act as a bridge between neighborhoods historically known by racial tension and riots during the civil rights movement and the growing, newly-defined Westside district.

# Welcome to Atlanta.

Radical hospitality greets guests along a driveway procession formed by massive tree canopies, unveiling the porte cochere, front porch inclusive of rocking chairs, sleek double height glass, all flanked by garden terrace lawns - a modern interpretation of authentic southern vernacular.



# EXPERIENCE

*signia* hilton at gwcc



**ALLOW ME**  
LOBBY + RECEPTION



**OPEN HOUSE**  
MARKET



**INVITE ONLY**  
CLUB SIGNIA



**ANYTHING GOES**  
LOBBY BAR + TERRACE LOUNGE



**WANDER ON BACK**  
CONFERENCE LEVEL 01



**HAVE A BALL Y'ALL**  
CONFERENCE LEVEL 02



**ALL IN A HARD DAY'S WORK**  
CONFERENCE LEVEL 03

ATLANTA can only be defined with each part of what makes it whole - the **VALUES** it holds, the landscape of the **PAST + FUTURE**, the neighborhoods, the **DIVERSITY** and most importantly the

# PEOPLE

from every walk of life, from every part of the world and country, our people define our city, the place we call home.





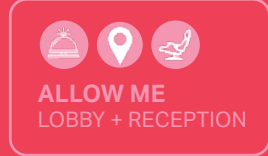
## Experience the Soul of Atlanta.

A City that is deeply rooted. Atlanta is hub for change. It is a city that pays homage to its history, but is growing up progressive – it is a beacon in the south, creating a crossroad where the past, present, and future meet.

To celebrate all of Atlanta's layers, its fluidity and ever changing attitude, its people and its creative spirit, a sculptural immersion floating above captures the essence of this city we call home.

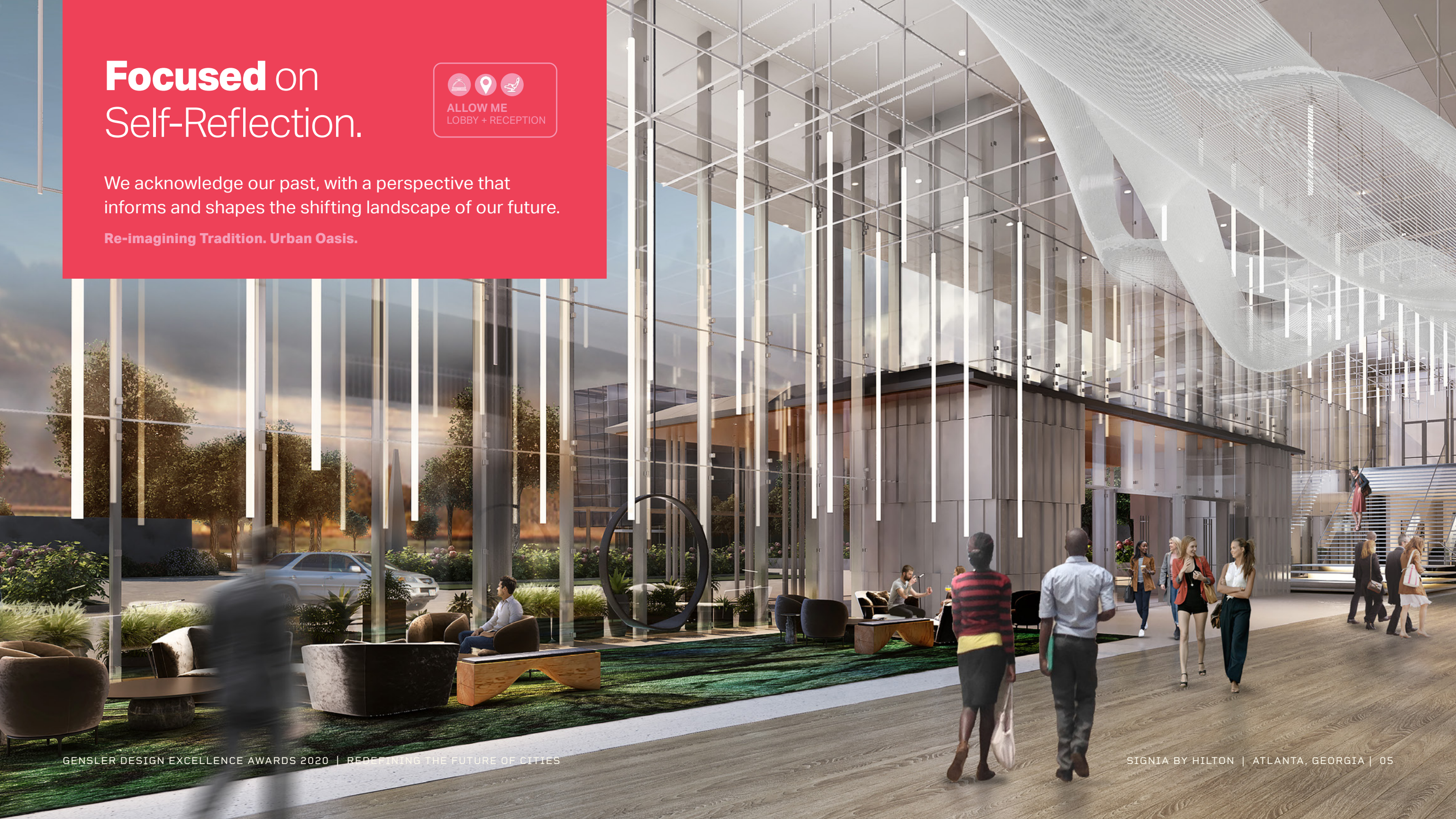


# Focused on Self-Reflection.



We acknowledge our past, with a perspective that informs and shapes the shifting landscape of our future.

**Re-imagining Tradition. Urban Oasis.**



# Southern by Trade.



ANYTHING GOES  
LOBBY BAR + TERRACE LOUNGE

Located in the South, we improve on our heritage by always adding a unique touch, creating a style that is classic southern embracing a modern touch.

**Radical Hospitality. Subtle Sophistication.**

# Catalyst for Change.



ALL IN A HARD  
DAY'S WORK  
CONFERENCE LEVEL

Transformation is part of Atlanta's DNA. We are a city that is continuously building, thriving on the diversity of people, values, and backgrounds.

**Understated Modern. Reinvention Defined.**





GENSLER DESIGN EXCELLENCE AWARDS 2020 | REDEFINING THE FUTURE OF CITIES



15

## Settle In.

Immerse yourself in today's interpretation of southern luxury. Where the art of necessity become comforts defining "home", the various guestrooms and suites celebrate authentic southern hand craft such as caning, weaving, and quilting. These familiar yet modernized details reveal themselves within the furnishings, art, and materiality, including the patchwork quilt inspired carpet.

SIGNIA BY HILTON | ATLANTA, GEORGIA | 08

# Copious Amenities.

The tower opens up at the podium level, creating numerous amenities overlooking the courtyard, Andrew Young International Boulevard Plaza and the Home Depot Backyard, an 11-acre greenspace for tailgating and other activities. Providing ultimate entertainment venues, the hotel includes a signature restaurant, sports bar, all-day dining, fitness center, spa and pool.





# Defining a District. Creating a Destination.

As a premier destination for sports, entertainment, and convention markets, GWCCA's championship campus annually hosts over 4M visitors to approximately 500 events generating \$1.9B in economic impact. Signia by Hilton aims to fill the need for luxury accommodations and convention space for this premier campus. With GWCCA as 4th largest convention center in the world, the hotel tower has been strategically located to provide easy access for conference attendees while providing excellent views of the surrounding structures and Atlanta skyline.

ATLANTA HAS BECOME AND HAS ALWAYS BEEN A  
PLACE WHERE YOU CREATE YOUR OWN UNIVERSE.  
BRIAN TYREE HENRY

AUTHORITY

# **Signia by Hilton Atlanta: In-House Art Program**

**Sally Faulkner**

**Principal, Faulkner + Locke**



GWCC – Signia Hilton Atlanta

---

Art Specifications

FAULKNER + LOCKE

22 April 2022

# DEEPLY ROOTED

GROUNDING. THRIVING. CULTIVATING A LEGACY.

A foundation rooted deeply in the south, our history is a story we tell together. We celebrate Atlanta - its past, its present and the shifting landscape it has become and will become. We build this beacon like a towering tree, its roots reach well below the surface, its branches stretch outwardly, embracing you. Here, you are ya'll, and ya'll are always welcome.

Drawing the world 24/7 365, our charm and gracious efforts are in our hearts, in our blood, in the air we breathe. Creating an authentic experience of Southern luxury, the warmth that comes from being welcomed not only into our city, but directly into our home, is an experience that cannot be recreated or reproduced.

Drawing your senses to

# PIVOT SOUTH.



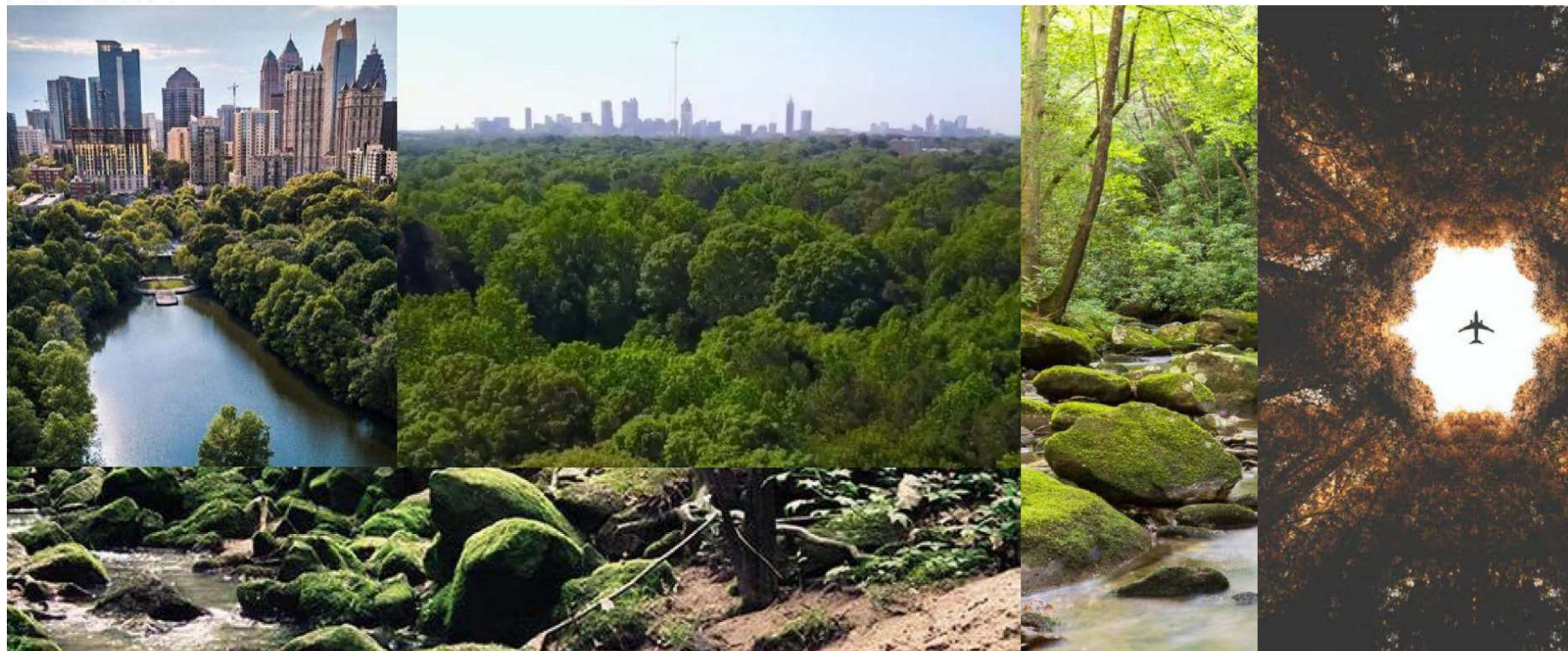


# LOBBY + RECEPTION

*monumental stair*



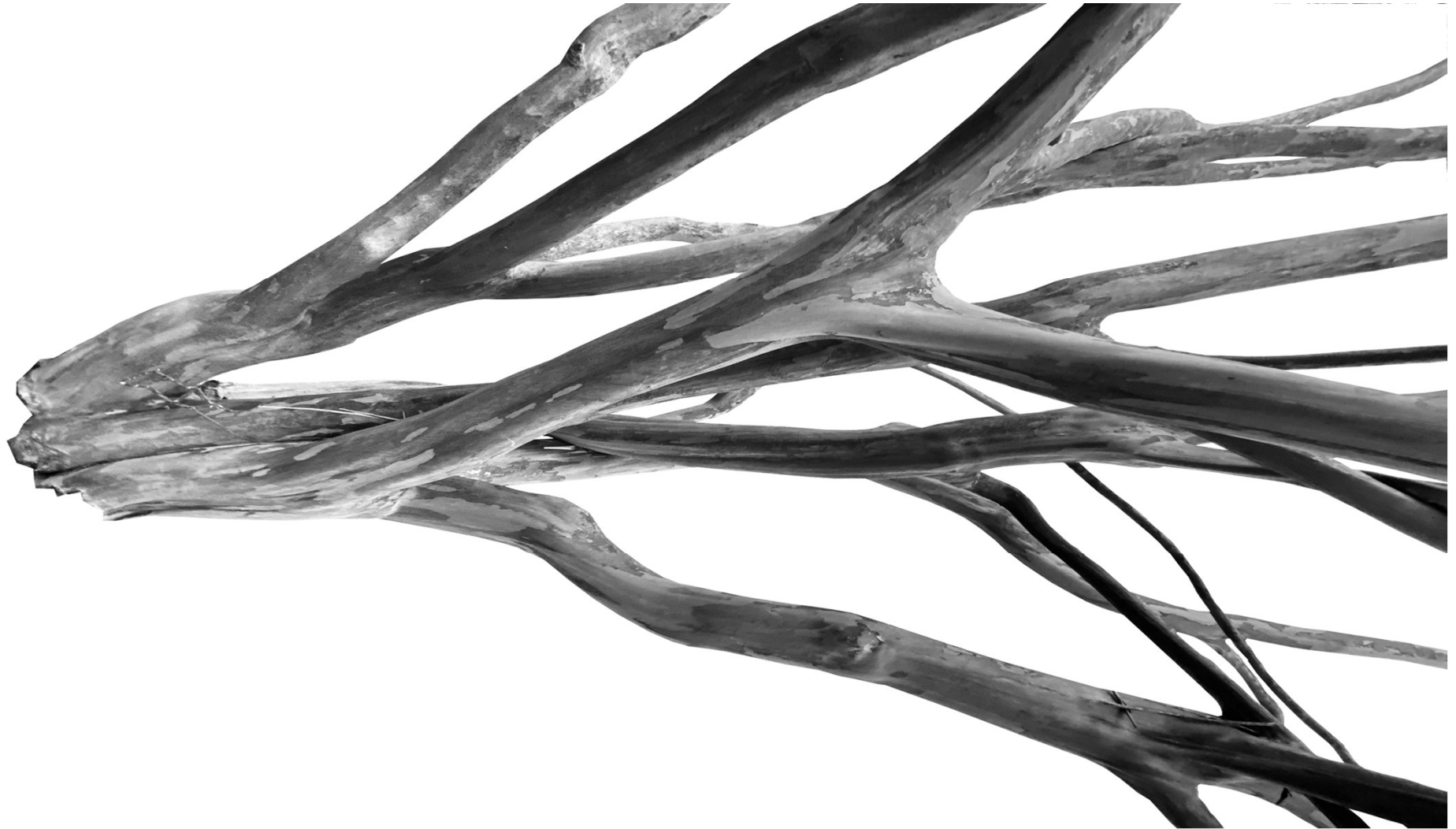
ATLANTA



THE CITY IN A FOREST

g.

**The City in a Forest**  
Life interwoven with nature



**Crape Myrtle | An ATLien**  
Banded and Bound  
Branching and Braided



Gensler

FAULKNER+LOCKE

formations studio

Hilton Atrium WoW Sculpture Concept  
Atlanta, Georgia

Development



Gensler

FAULKNER+LOCKE

formations studio

Hilton Atrium WoW Sculpture Concept  
Atlanta, Georgia

Development



Gensler

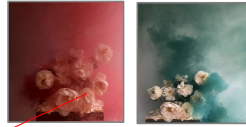
FAULKNER+LOCKE

formations studio

Hilton Atrium WOW Sculpture Concept  
Atlanta, Georgia

Development





## Level 1



01 ADMIN OFFICES  
SCALE: 1/8"=1'-0"



**Level 1**  
**Art @ Main Lobby**  
**Conference**  
**LOB-700-A**

Artist: C Carr (Atlanta Artist)  
Title: Uncharted Path  
Medium: mixed media on linen  
canvas  
Image Size: 62" h x 72" w  
Frame: gallery wrap on 2" stretcher  
bars  
Framed Size: 62" h x 72" w  
Qty: 2

**Note:**  
Possibly made in two panels

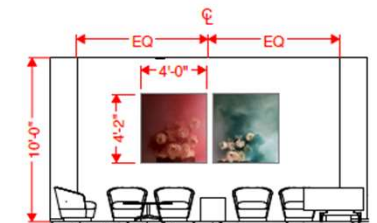


\*For style only

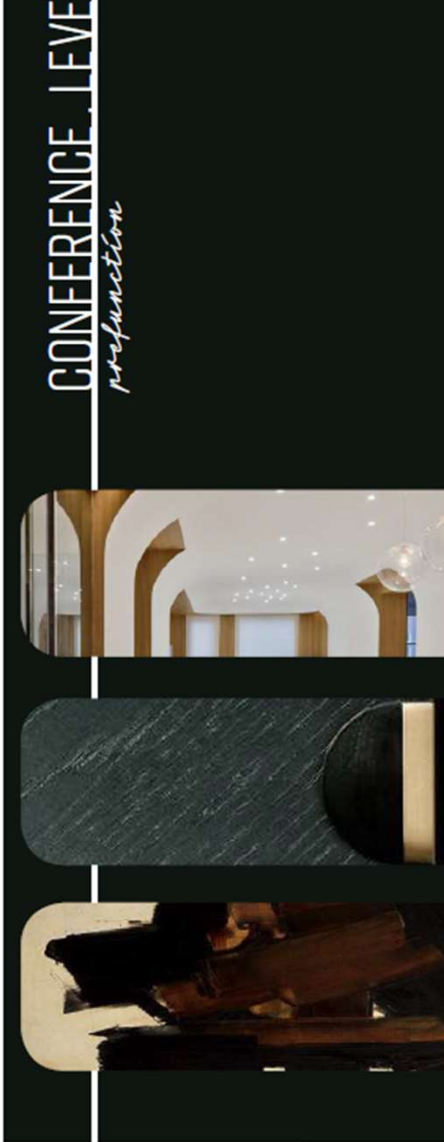


**Level 1**  
**Art @ Executive Office**  
**Waiting Room**  
**LOB-700-B**

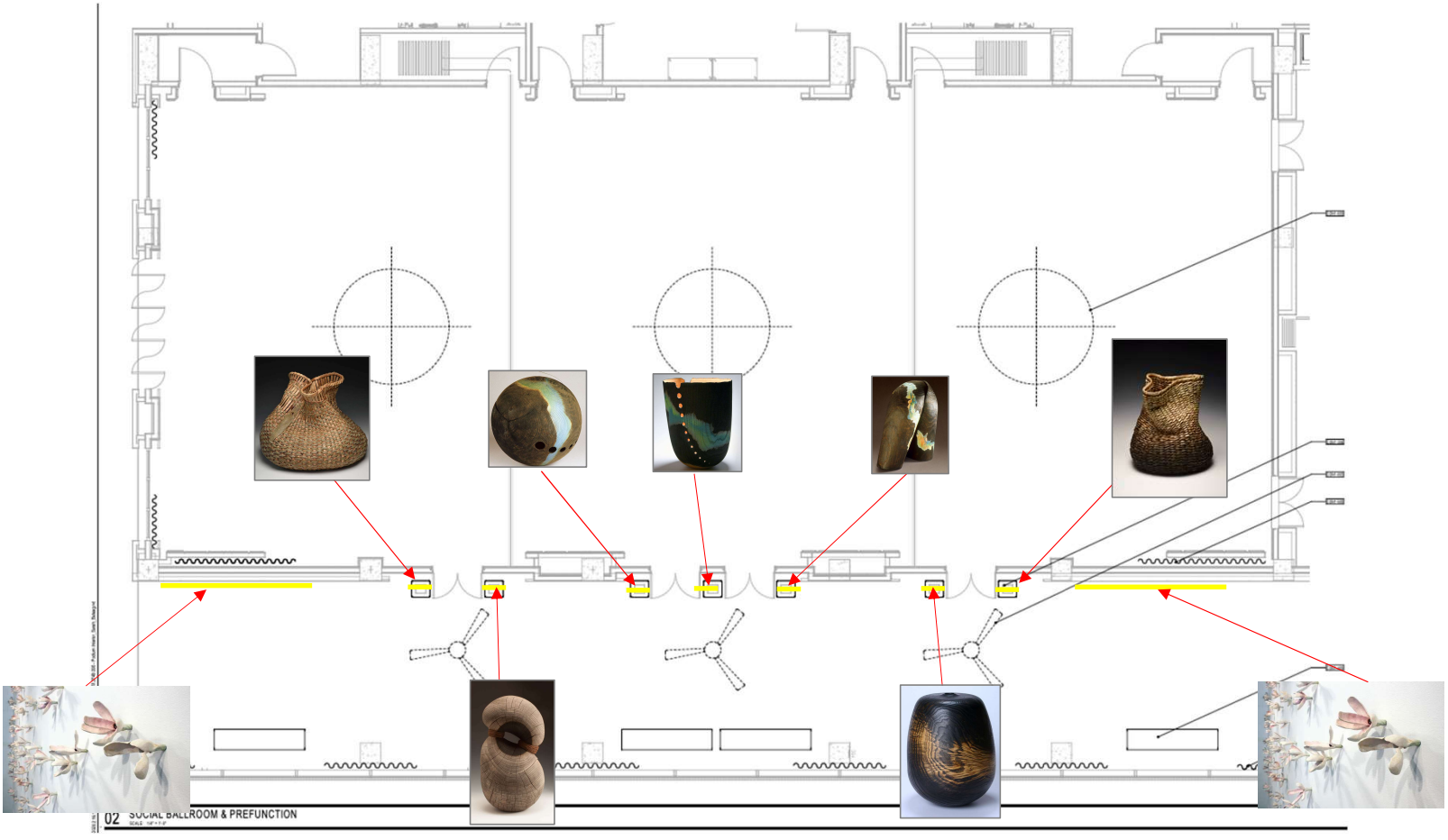
Artist: A Bailey (Atlanta Artist)  
Title: Revolution Empress Series  
Medium: photography on paper  
Image Size: 30" h x 28" w  
Mat: 8 ply Cres White 3" all sides  
Frame: Black Frame 2" w  
Framed Size: 40" h x 38" w  
Qty: 2

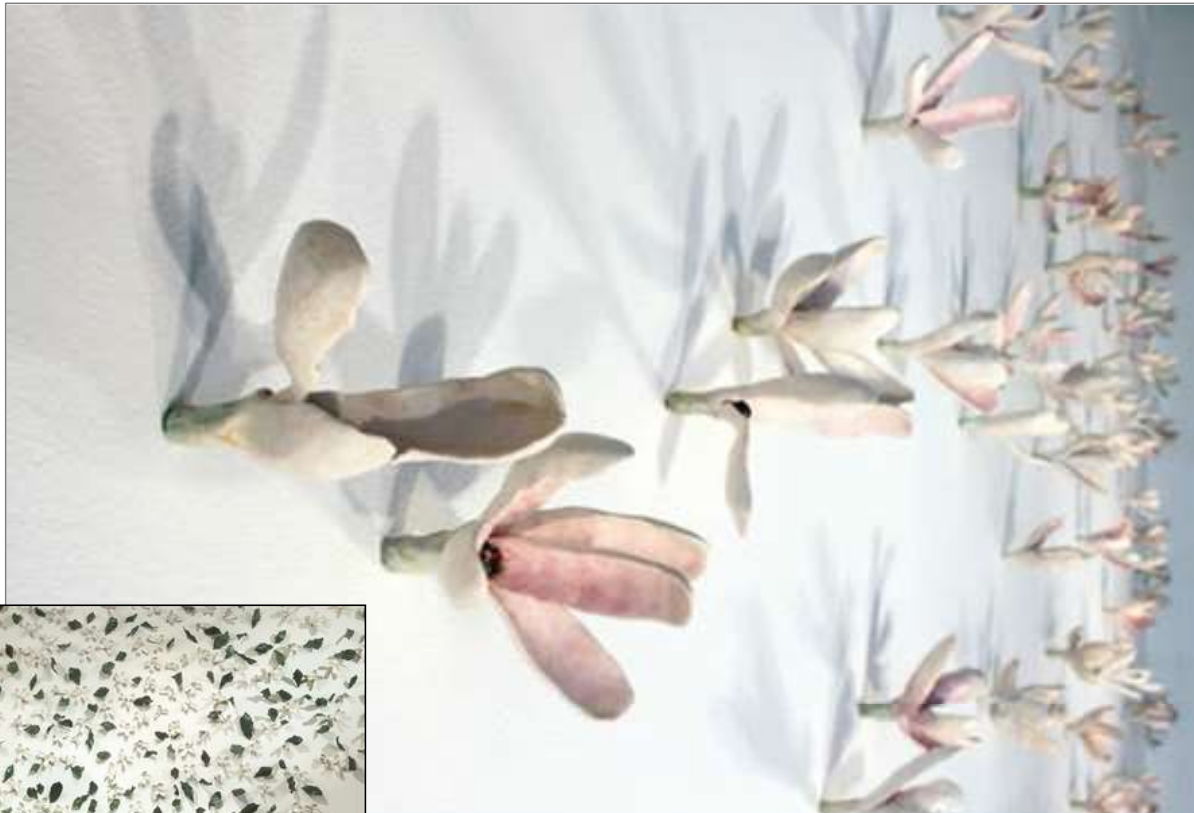


\*For style only



Level 1  
Conference

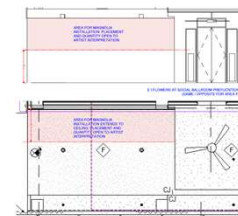




**Level 1**  
**Art @ Social Ballroom**  
**Prefunction**  
CON1-700-E  
CON1-700-F

Artist: B Sabin  
Title: Magnolias  
Medium: ceramic  
Overall Size: 168" h x 300" w  
Qty: 2 lots

**Note:**  
Mostly white with a few peach



\*For style only



## Level 1

Art @ Social Ballroom

Prefunction Vitrines

CON1-700-AC1

Artist: M Tommey (GA Artist)  
Title: Pinched Basket I  
Medium: woven reeds and mixed media  
Overall Size: 18" h x 18" w x 20" d approx.  
Qty: 1

**Note:**

Decidedly contemporary take on the century's old tradition of basket weaving.



\*For style only



**Level 1**

**Art @ Social Ballroom**  
**Prefunction Vitrines**  
**CON1-700-AC3**

Artist: T Hoyer  
Title: Sycamore Ailanthus  
Medium: wood and steel  
Overall Size: 15" h x 7.5" w  
Qty: 1

**Note:**  
Contemporary twist on the traditional turned wood bowl.



\*For style only





## Level 1

Art @ Social Ballroom  
Prefunction Vitrines

CON1-700-AC5

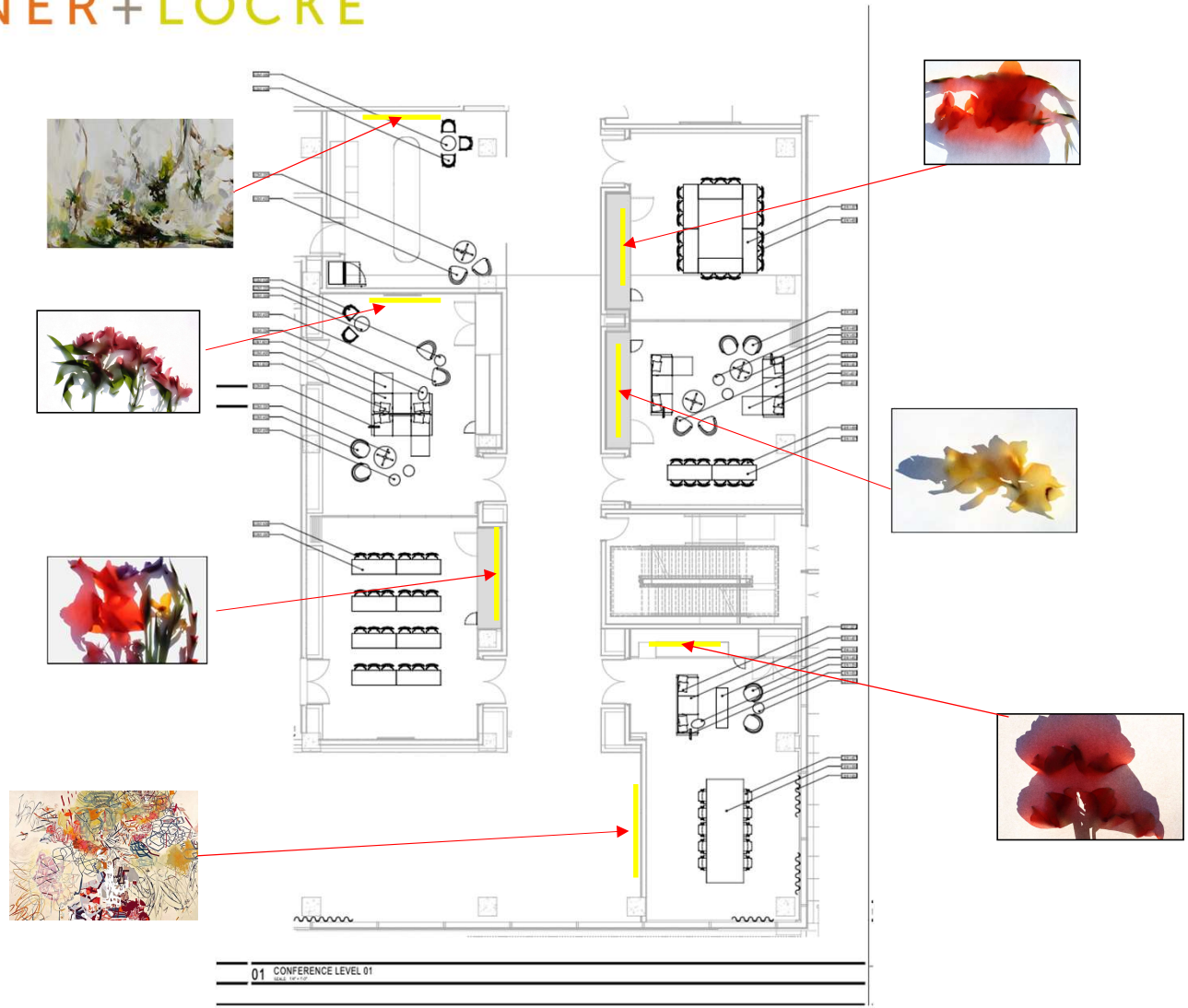
Artist: D Ellsworth (NC Artist)  
Title: Solstice I  
Medium: stained wood  
Overall Size: 29" h x 9" w x 9" d  
Qty: 1

**Note:**

Contemporary twist on the traditional turned wood bowl.



\*For style only



01 CONFERENCE LEVEL 01

## Level 1 Conference



**Level 1**  
**Art @ End Wall Social**  
**Ballroom Prefunction**  
**CON1-700-G**

Artist: R Rodriguez (Atlanta Artist)  
Title: My Double Life  
Medium: oil on canvas  
Image Size: 72" h x 114" w  
Frame: gallery wrap on 2" stretcher bars  
Framed Size: 72" h x 114" w

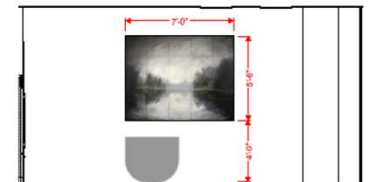


\*For style only

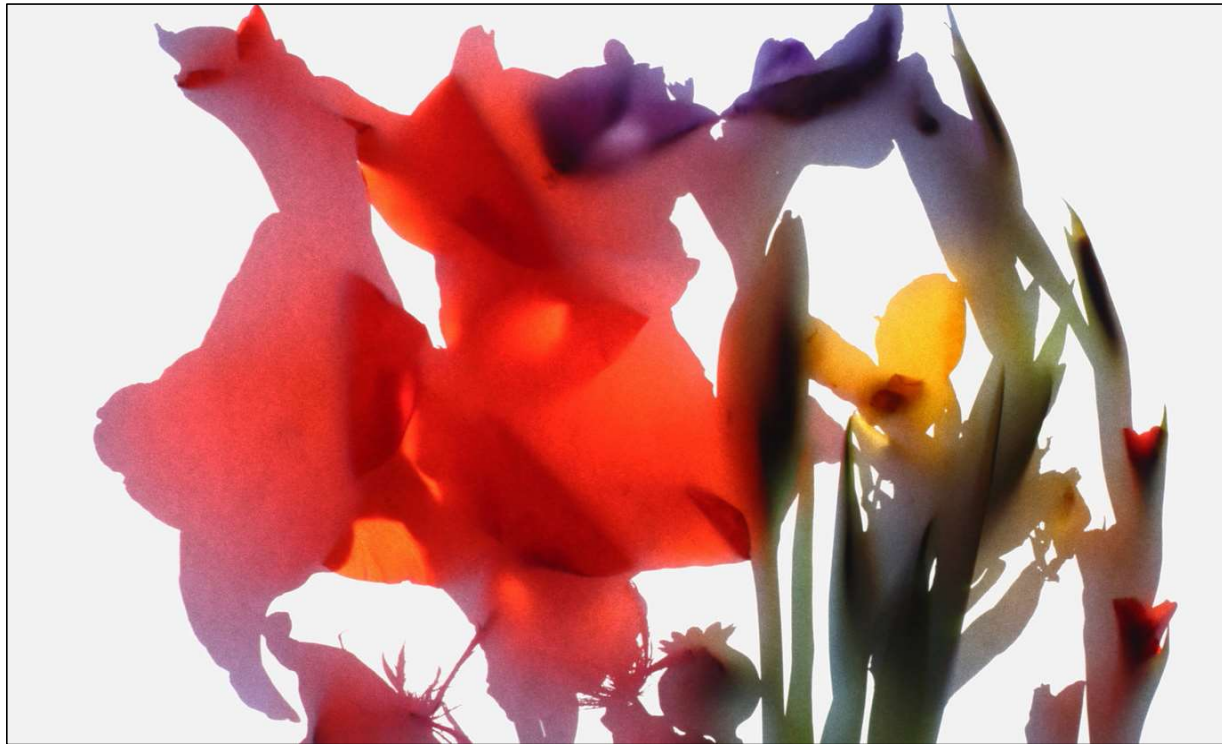


**Level 1**  
**Art @ Hospitality Lounge**  
**CON1-700-I**

Artist: J Jones (Atlanta Artist)  
Title: Angel Oak  
Medium: mixed media on canvas  
Image Size: 49" h x 71" w  
Frame: Black Floater  
Framed Size: 50" h x 72" w

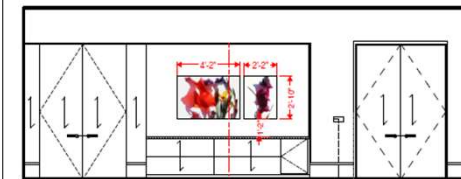
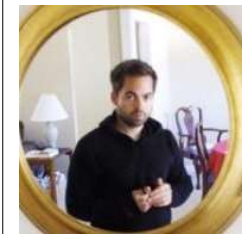


\*For style only



**Level 1**  
**Art @ Typical Meeting**  
**Room**  
**CON1-700A-J1**

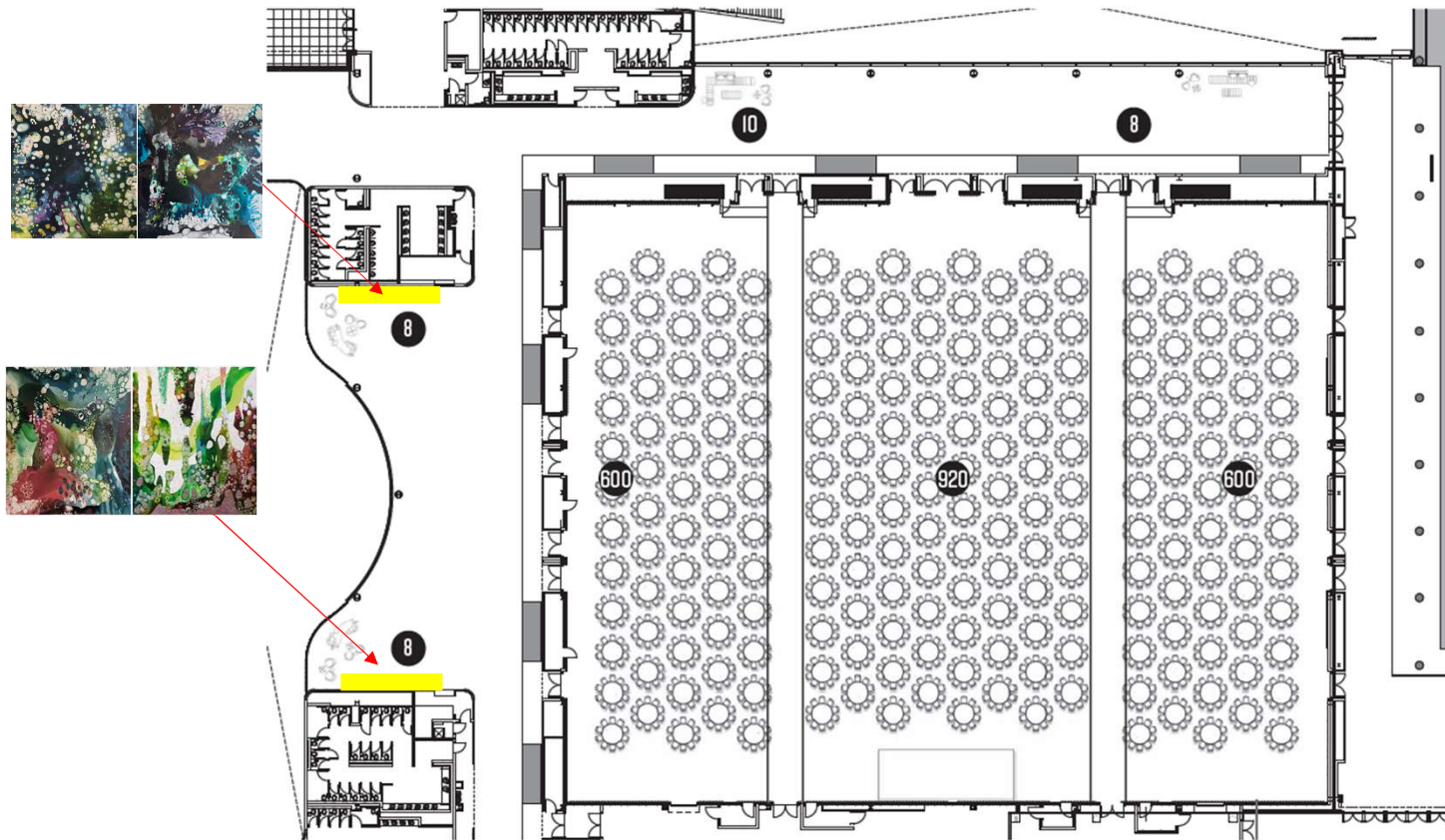
Artist: R Solomon  
Title: Bouquet I  
Medium: photography on paper  
Image Size: 20" h x 36" w  
Mat: 8 ply Cres White 5" all sides  
Frame: Black Frame 2" w  
Framed Size: 34" h x 50" w



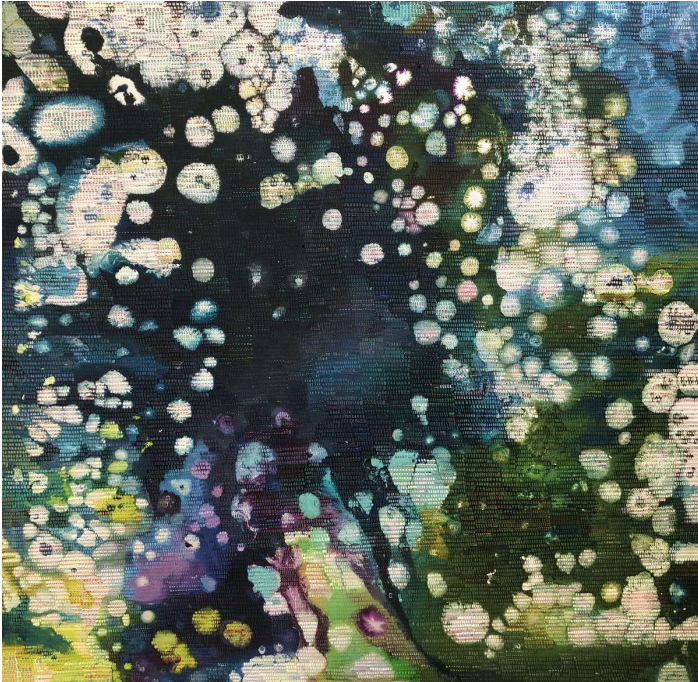
\*For style only



Level 2  
Ballroom Prefunction  
Entry



# FAULKNER+LOCKE

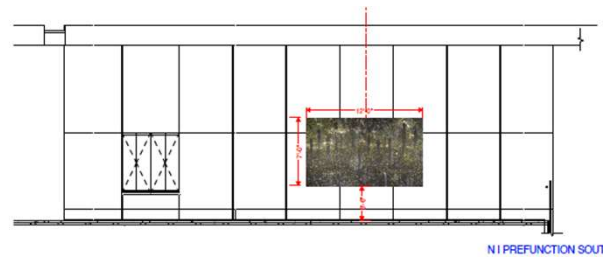


## Level 2 Art @ Ballroom Prefunction Entry – North CON2-700-M

Artist: WW Bailey (Atlanta Artist)  
Title: The Joy Series  
Medium: media on canvas  
Image Size: 61" h x 61" w, each  
Frame: Black Floater  
Framed Size: 62"h x 62"w, each



\*For style only





# FAULKNER+LOCKE

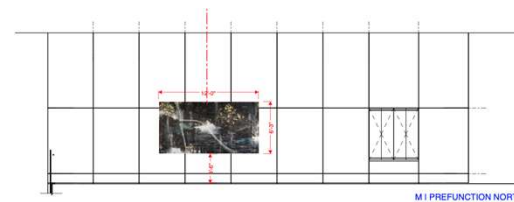


## Level 2 Art @ Ballroom Prefunction Entry – South CON2-700-N

Artist: WW Bailey (Atlanta Artist)  
Title: The Garden Series  
Medium: media on canvas  
Image Size: 61" h x 61" w, each  
Frame: Black Floater  
Framed Size: 62"h x 62"w, each

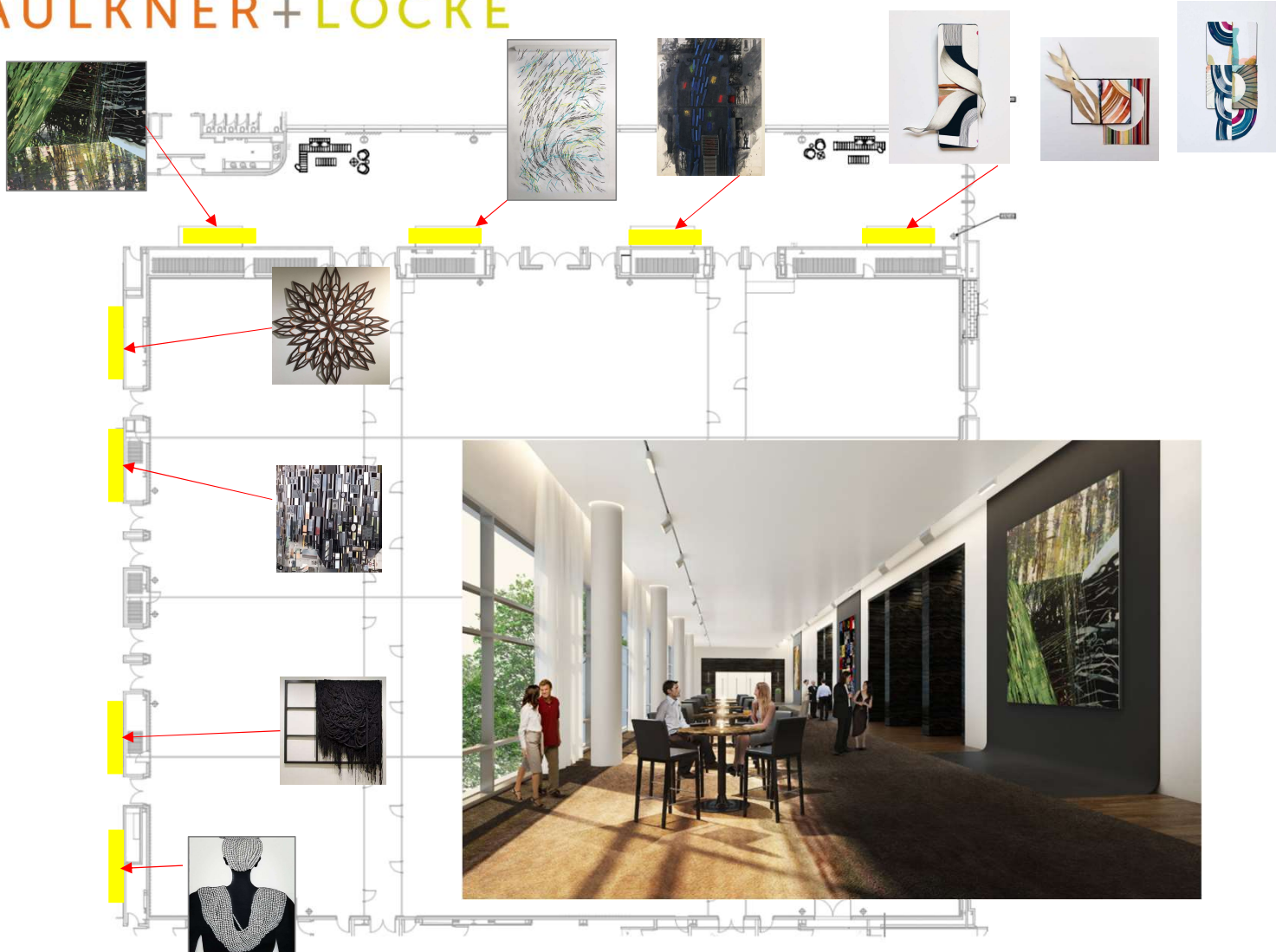


\*For style only



Faulkner+Locke \ 1731 Commerce Drive NW \ Suite 114 \ Atlanta, GA 30318 \ 404.367.8300

FAULKNER+LOCKE



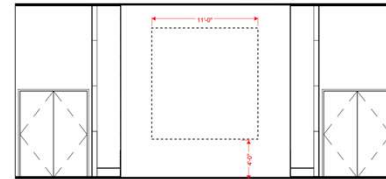
## Level 2 Ballroom Prefunction Gallery Arrangement

# FAULKNER+LOCKE



## Level 2 Art @ Ballroom Prefunction Gallery Arrangement CON2-700

Artist: E Magill-Oliver (ATL Artist)  
Title: Park Sketches  
Medium: 3D ceramic, wood, and metal  
Image Size: various  
Overall Size: to fill 84" h x 84" w



PREFUNCTION GALLERY | GALLERY ARRANGEMENTS TO FIT WITH OVERALL SCALE OF SINGLE PIECE  
PLACEMENT AND SIZE FLEXIBLE PER ARRANGEMENT, MAINTAINING 4'-0" AFF

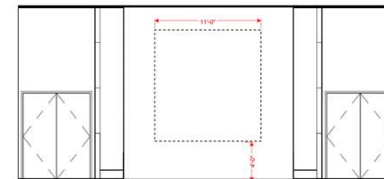


\*For style only

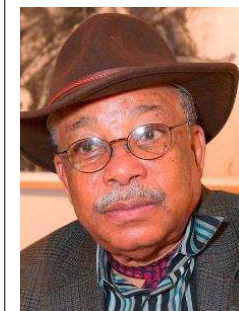


**Level 2**  
**Art @ Ballroom**  
**Prefunction Gallery**  
**Arrangement**  
**CON2-700**

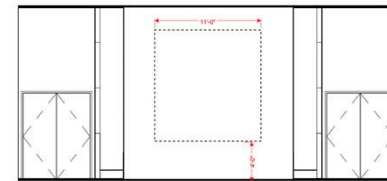
Artist: D Locke (Atlanta Artist)  
Title: Southern Mansions  
Media: mixed media on canvas  
Image Size: 96" h x 72" w  
Frame: gallery wrap on 2" stretcher bars  
Framed Size: 96" h x 72" w



PREFUNCTION GALLERY | GALLERY ARRANGEMENTS TO FIT WITHIN OVERALL SCALE OF SINGLE PIECE  
PLACEMENT AND SIZE FLEXIBLE PER ARRANGEMENT, MAINTAINING 4'-0" AFF



\*For style only



PREFUNCTION GALLERY | GALLERY ARRANGEMENTS TO FIT WITHIN OVERALL  
SCALE OF SINGLE PIECE  
PLACEMENT AND SIZE FLEXIBLE PER ARRANGEMENT, MAINTAINING 4'-0" AFF

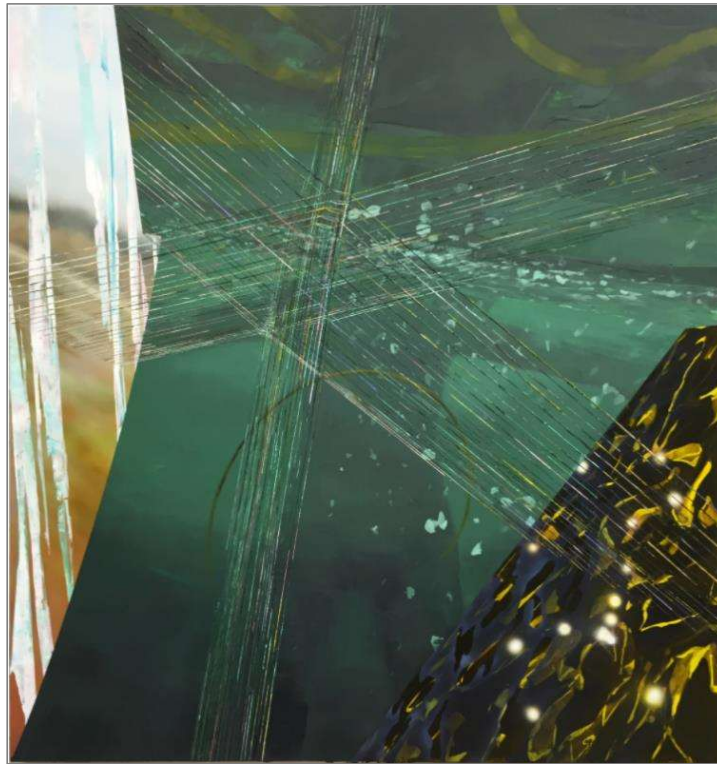
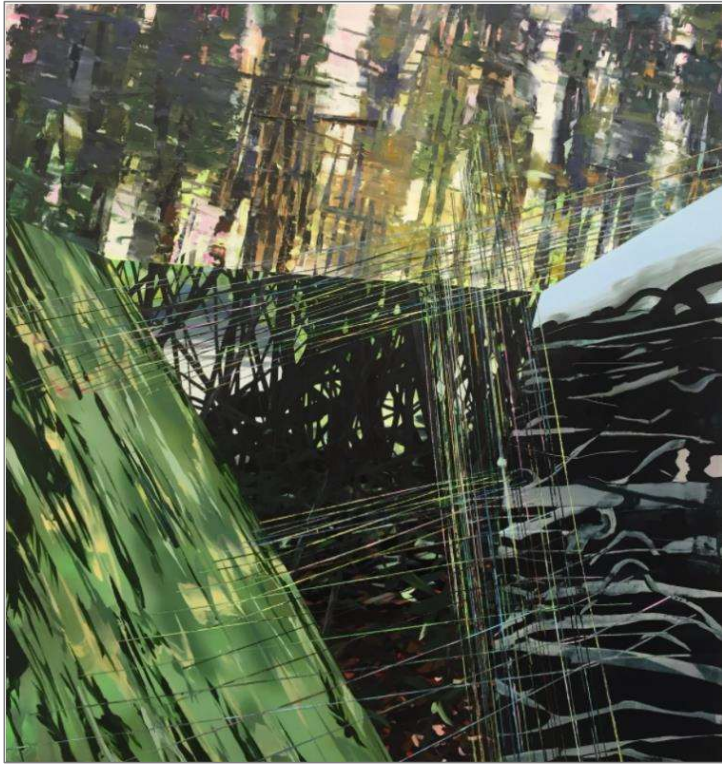
**Level 2**  
**Art @ Ballroom**  
**Prefunction Gallery**  
**Arrangement**  
**CON2-700**

Artist: J Jones (Atlanta Artist)  
Title: Wind Quilt  
Medium: ribbon machine stitched on tulle  
Overall Size: 108" h x 72" w

**Note:**  
This work derives its essence from Southern quilting traditions fused with data from Atlanta's atmospheric and wind systems.



\*For style only

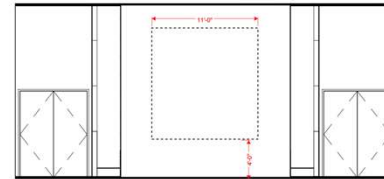


## Level 2 Art @ Ballroom Prefunction Gallery Arrangement CON2-700

Artist: B Britton (Atlanta Artist)  
Title: Slacker Beast Series  
Medium: mixed media on wood panel  
Image Size: 84" h x 84" w  
Frame: Painted Wood Sides  
Framed Size: 84" h x 84" w



\*For style only

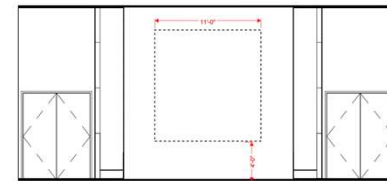


PREFUNCTION GALLERY | GALLERY ARRANGEMENTS TO FIT WITHIN OVERALL  
SCALE OF SINGLE PIECE  
PLACEMENT AND SIZE FLEXIBLE PER ARRANGEMENT, MAINTAINING 4'-0" AFF



**Level 2**  
**Art @ Ballroom**  
**Prefunction Gallery**  
**Arrangement**  
**CON2-700**

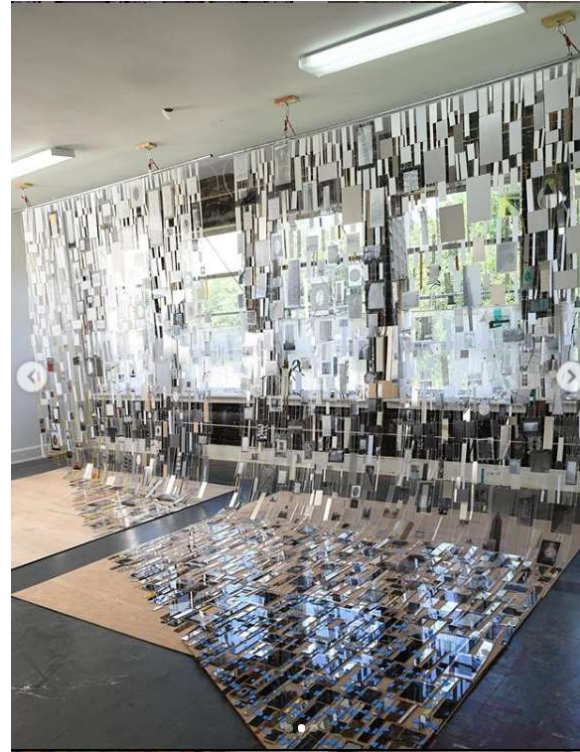
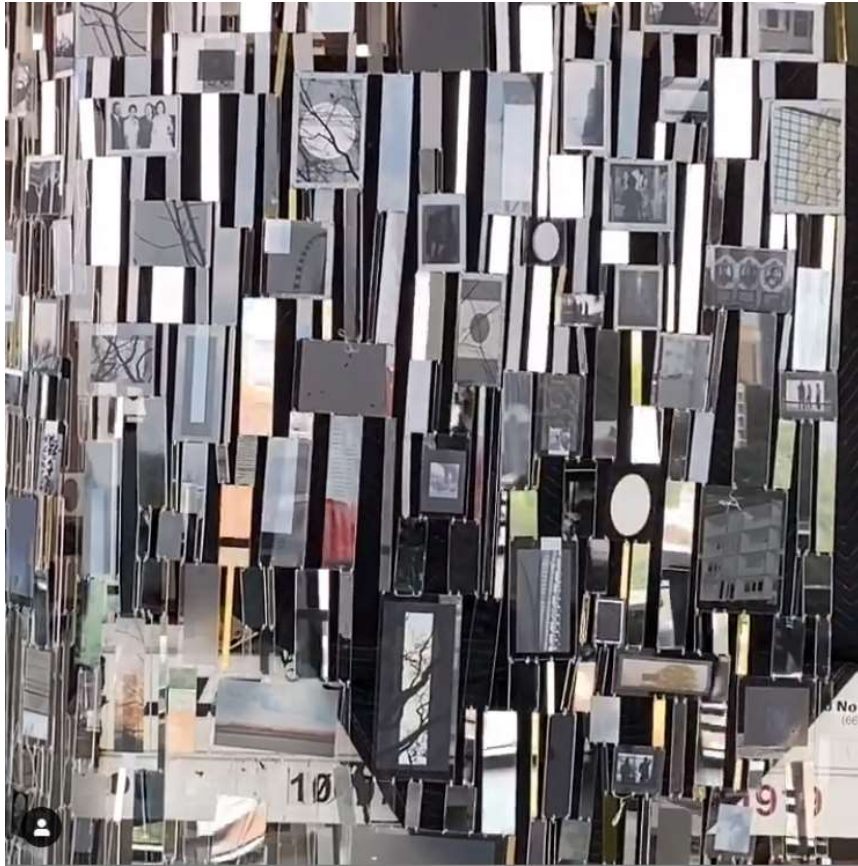
Artist: H Chambers (Atlanta Artist)  
Title: Wings Series  
Medium: wood  
Overall Size: 96" h x 96" w



PREFUNCTION GALLERY | GALLERY ARRANGEMENTS TO FIT WITH OVERALL  
SCALE OF SINGLE PIECE  
PLACEMENT AND SIZE FLEXIBLE PER ARRANGEMENT, MAINTAINING 4'-0" AFF

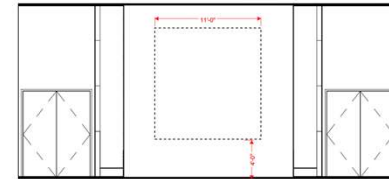


\*For style only



**Level 2**  
**Art @ Ballroom**  
**Prefunction Gallery**  
**Arrangement**  
**CON2-700**

Artist: L Blades (Atlanta Artist)  
Title: ATL Assemblage  
Medium: mixed media  
Overall Size: 84" h x 84" w



PREFUNCTION GALLERY | GALLERY ARRANGEMENTS TO FIT WITH OVERALL SCALE OF SINGLE PIECE  
PLACEMENT AND SIZE FLEXIBLE PER ARRANGEMENT, MAINTAINING 4'-0" AFF



\*For style only



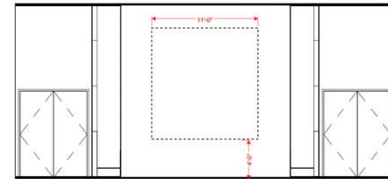


## Level 2 Art @ Ballroom Prefunction Gallery Arrangement CON2-700

Artist: SY James (Atlanta Artist)  
Title: The Window  
Medium: woven felt and wood  
Frame: n/a  
Overall Size: 132" h x 132" w



\*For style only



PREFUNCTION GALLERY | GALLERY ARRANGEMENTS TO FIT WITH OVERALL  
SCALE OF SINGLE PIECE  
PLACEMENT AND SIZE FLEXIBLE PER ARRANGEMENT, MAINTAINING 4'-0" AFF

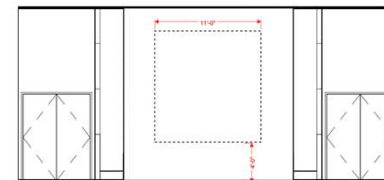


**Level 2**  
**Art @ Ballroom**  
**Prefunction Gallery**  
**Arrangement**  
**CON2-700**

Artist: T Murrell (Atlanta Artist)  
Title: Dahlia  
Progress  
Medium: collaged and cut paper  
Image Size: 60”h x 60”w  
Mat: float on mat  
Frame: Black Shadowbox  
Framed Size:

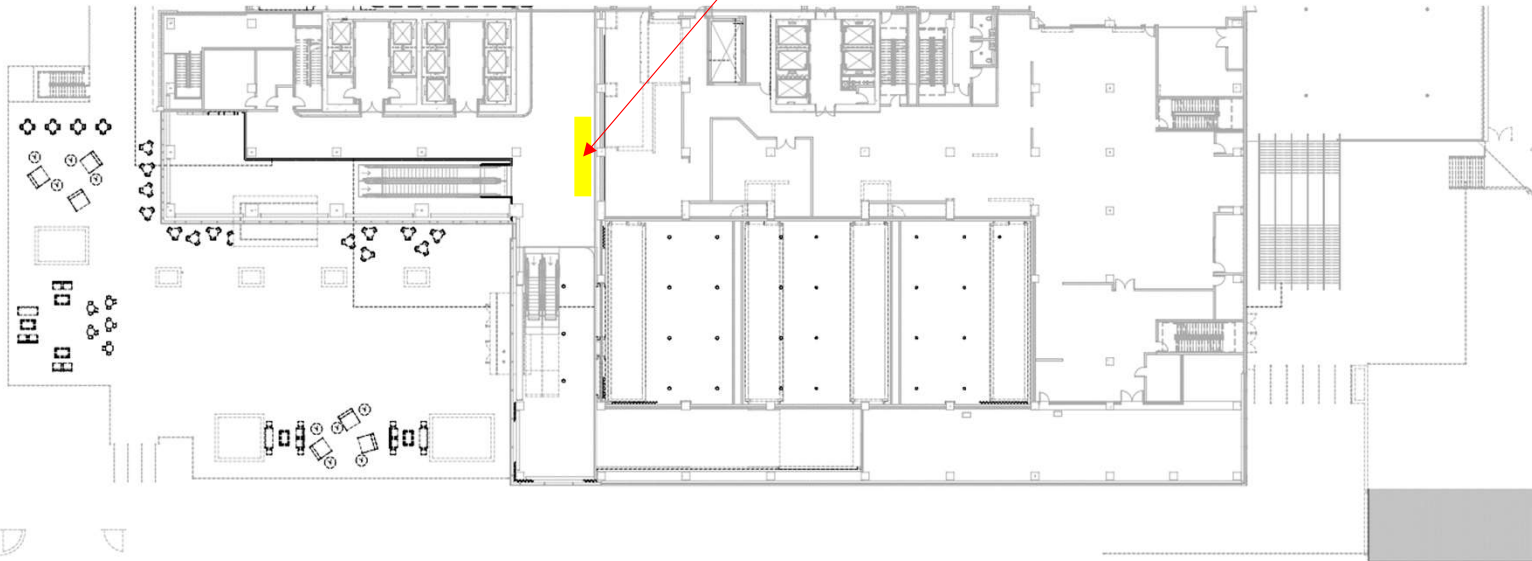


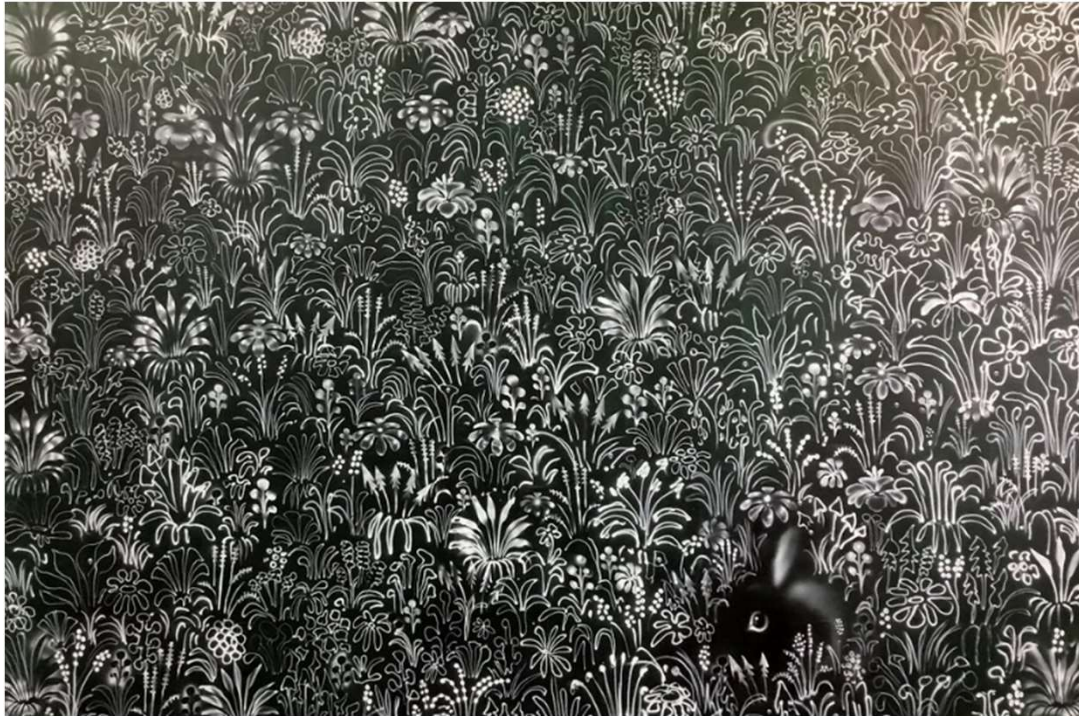
\*For style only



PREFUNCTION GALLERY | GALLERY ARRANGEMENTS TO FIT WITHIN OVERALL  
SCALE OF SINGLE PIECE  
PLACEMENT AND SIZE FLEXIBLE PER ARRANGEMENT, MAINTAINING 4'-0" AFF

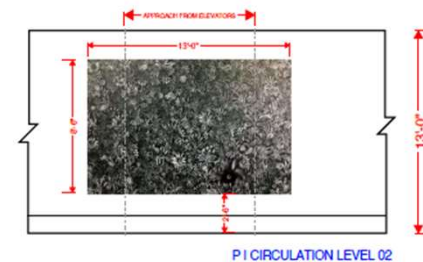
**Level 2**  
**Ballroom Prefunction**  
**Elevator/Circulation**





**Level 2**  
**Art @ Ballroom**  
**Prefunction Circulation**  
**CON2-700-P**

Artist: J Peragine (ATL Artist)  
Title: After The Hunt  
Medium: mixed media on canvas  
Image Size: 102" h x 156" w  
Frame: gallery wrap on 2" stretcher bars  
Framed Size: 102" h x 156" w



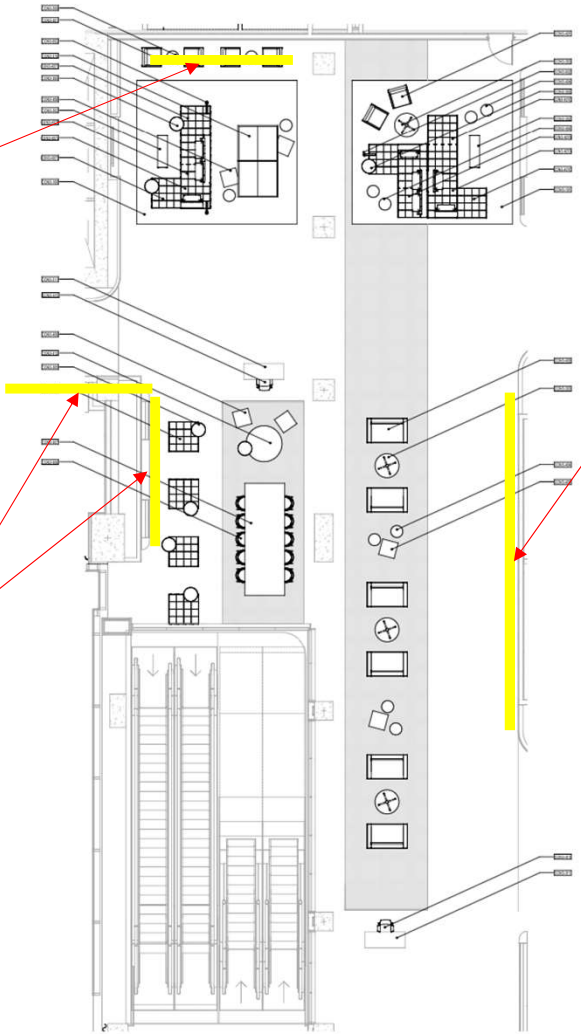
\*For style only



# CONFERENCE LEVEL

*flex meeting*





## Level 3 Hospitality Flex Zone

# FAULKNER+LOCKE



## Level 3 Art @ Hospitality Flex Zone CON3-700-U

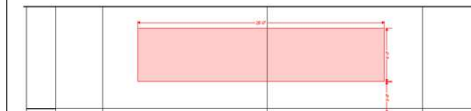
Artist: M Arts (GA Artist)  
Title: Atlanta History Wall  
Medium: mixed media print on wood  
or other solid media  
Overall Size: 40" h x 168" w

**Note:**  
Install lenticular wall display  
Featuring two distinct images, each visible  
while looking either left or right.

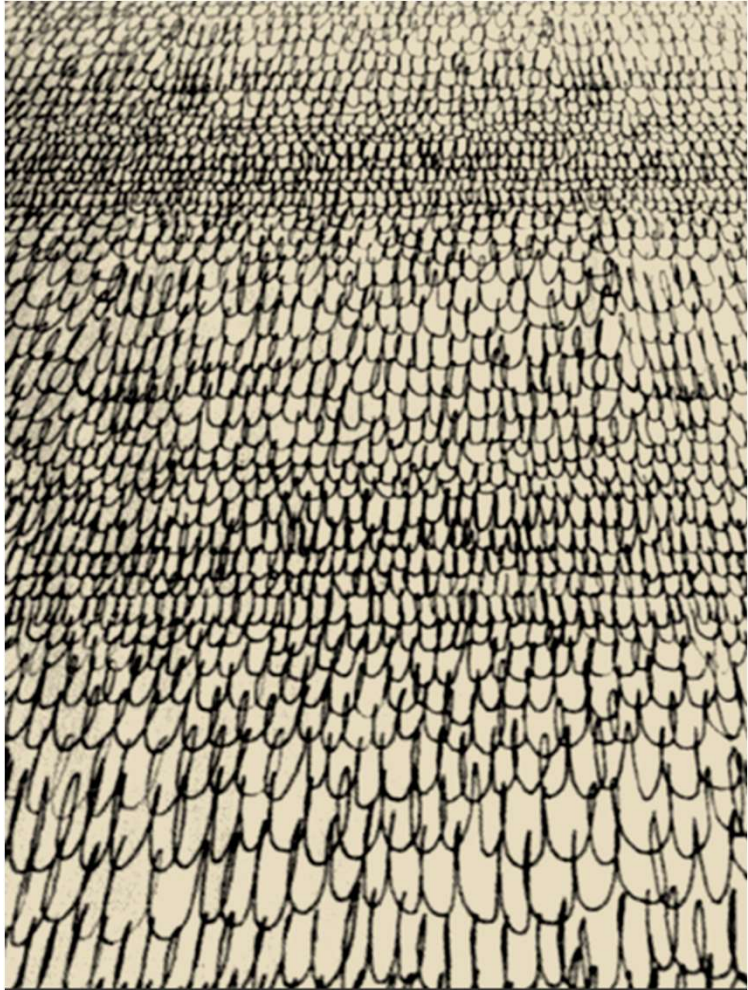
**Topic Suggestions:**  
GWCC imagery from past and present  
showing considerable growth from  
inception to now.

Atlanta's leaders from yesterday and  
today.

Timeline of the history of Atlanta.



\*For style only



**Level 3**  
**Art @ Hospitality Flex**  
**Zone**  
**CON3-700-V**

Artist: S Thada  
Title: Sgraffito  
Medium: custom type 2 textured  
vinyl wallcovering  
Overall Size: 138" h x 660" w  
4" bleed all sides

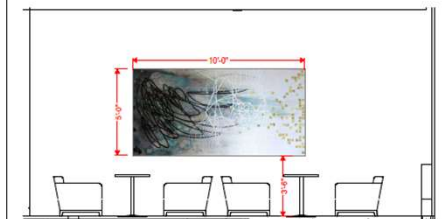
\*For style only





**Level 3**  
**Art @ Hospitality Flex**  
**Zone**  
**CON3-700-W**

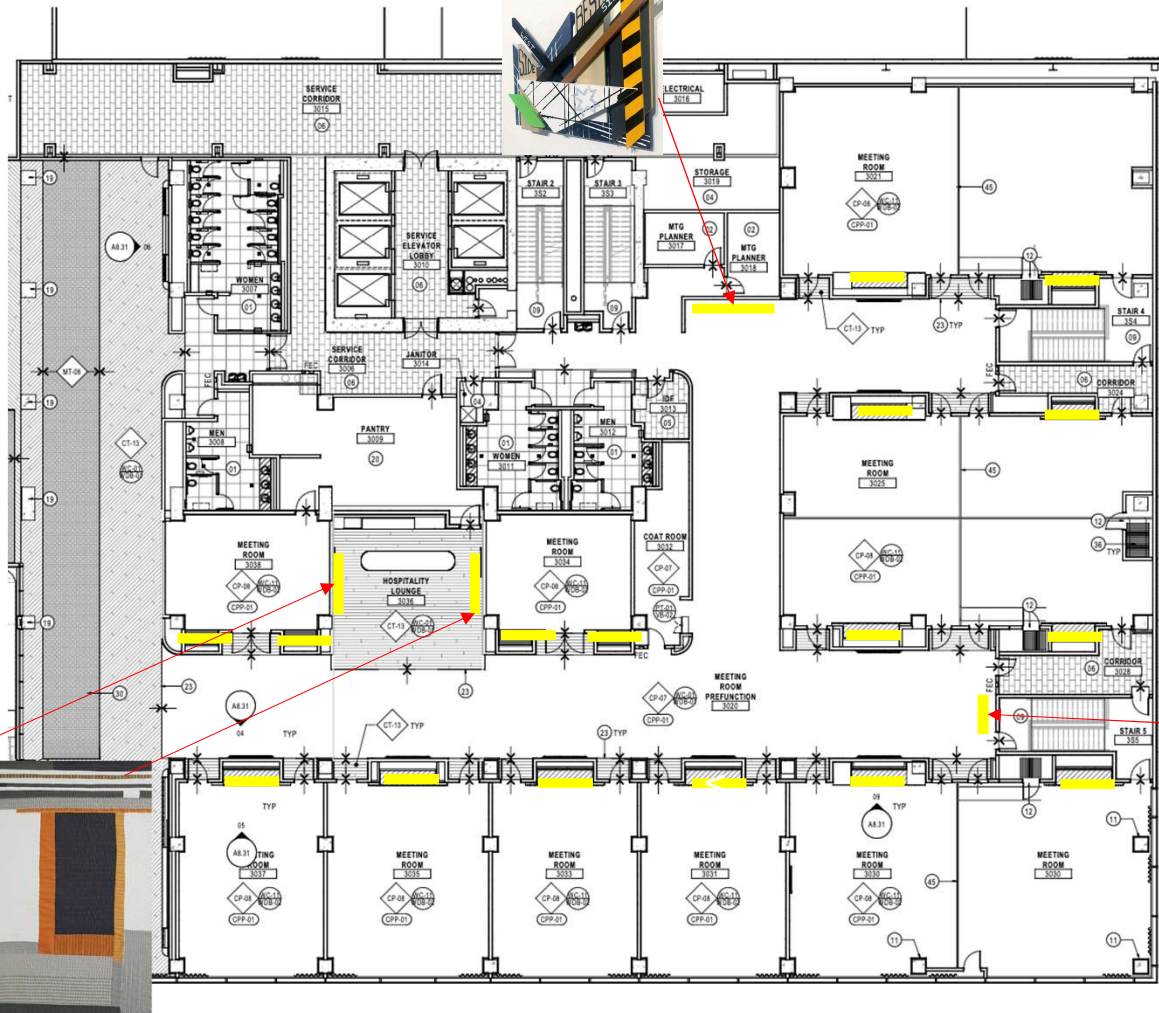
Artist: A Dean (Atlanta Artist)  
Title: Resurfacing  
Medium: mixed media on wood panel  
Image Size: 60" h x 120" w  
Frame: n/a painted sides  
Overall Size: 60" h x 120" w

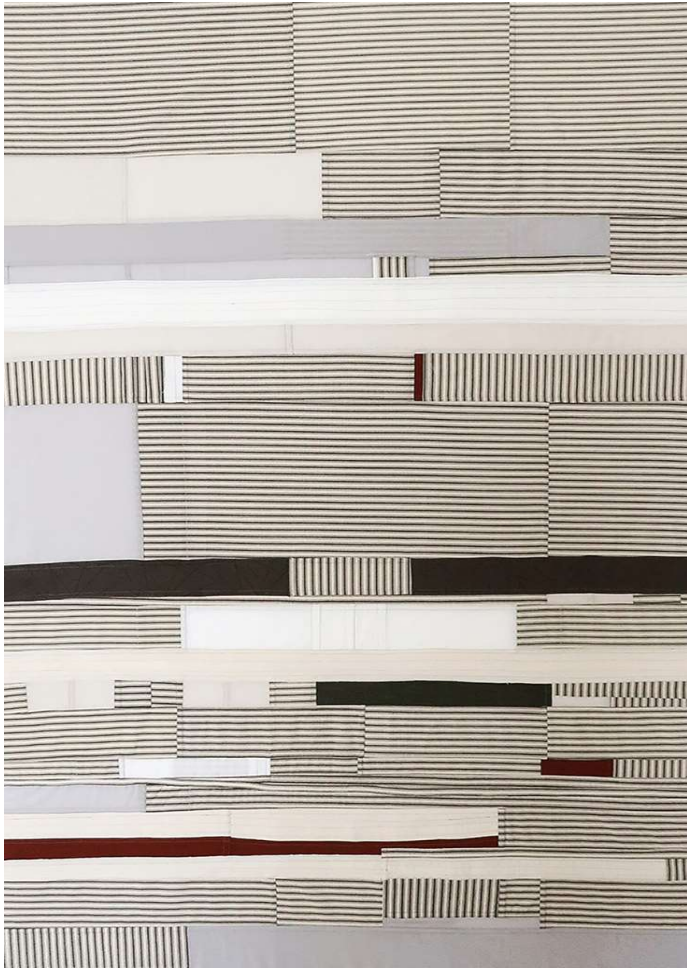


\*For style only



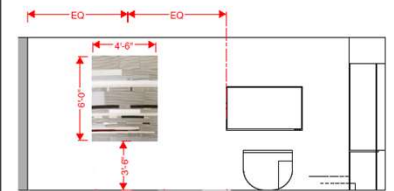
## Level 3 Meeting Rooms and Prefunction





**Level 3**  
**Art @ Hospitality Lounge**  
**CON3-700-BB**

Artist: S Schumacher (AL Artist)  
Title: Coastal Plain Threshold I  
Medium: fiber  
Image Size: 62" h x 44" w  
Mat: Float on Cres Linen 3" all sides  
Frame: Black Shadow Box 2" w  
Framed Size: 72" h x 54" w

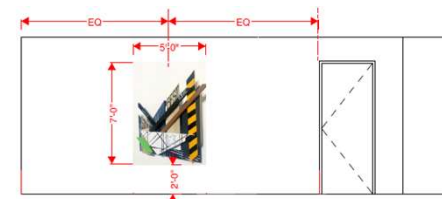
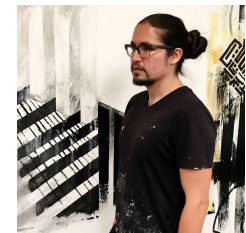


\*For style only



**Level 3**  
**Art @ Meeting Room**  
**Prefunction**  
**CON3-700-DD**

Artist: J Ceballos (Atlanta Artist)  
Title: Structural Study  
Medium: mixed media on wood  
Overall Size: 84" h x 60" w x 4" d



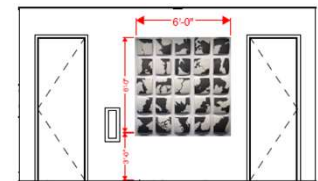
\*For style only



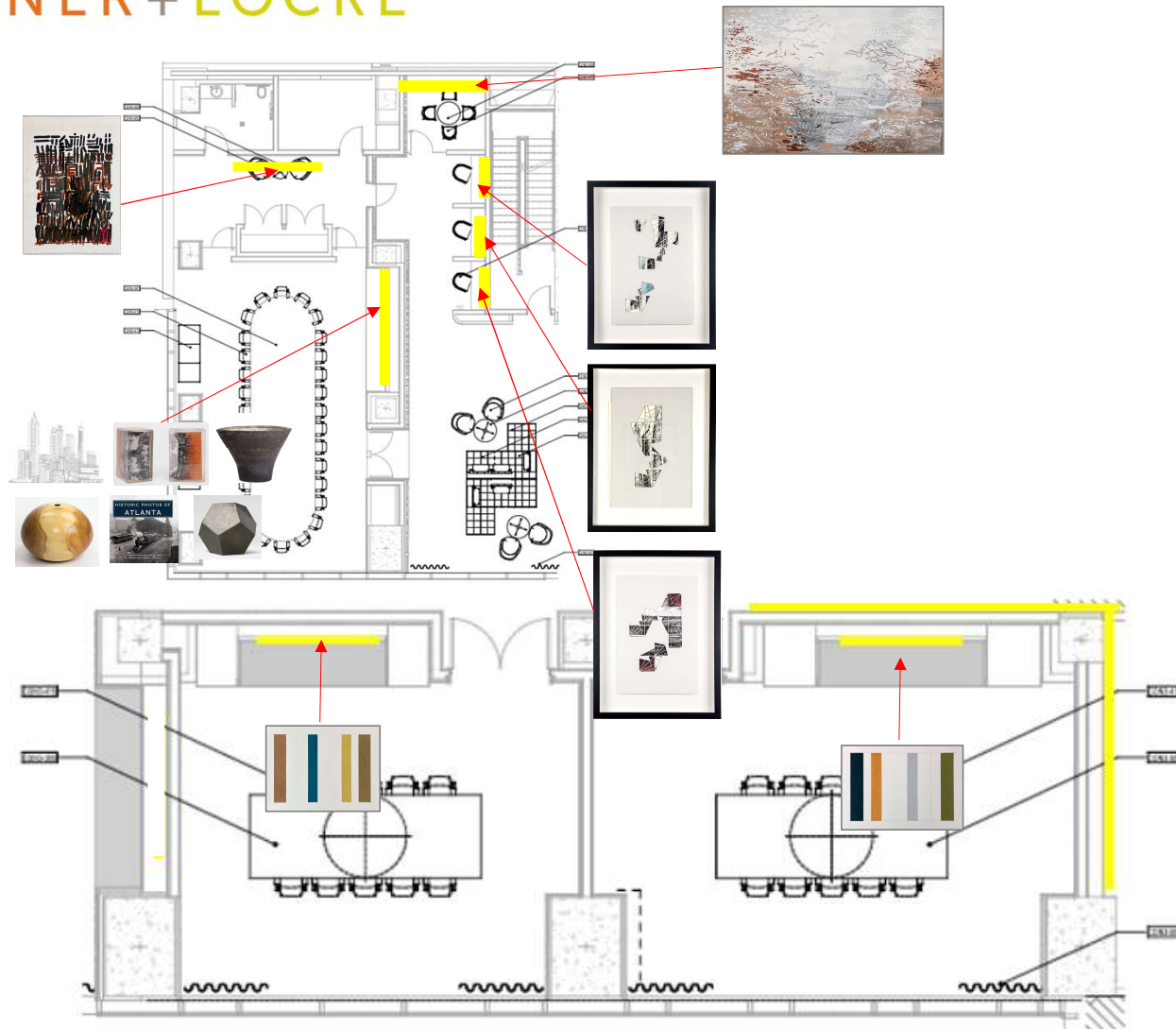
**Level 3**  
**Art @ Meeting Room**  
**Prefunction**  
**CON3-700-EE**

Artist: G Turk (Atlanta Artist)  
Title: Atlanta Passage Series  
Medium: ceramic  
Image Size: 14" h x 14" w x 3.5" d  
Overall Size: 50" h x 68" w  
Qty: 12

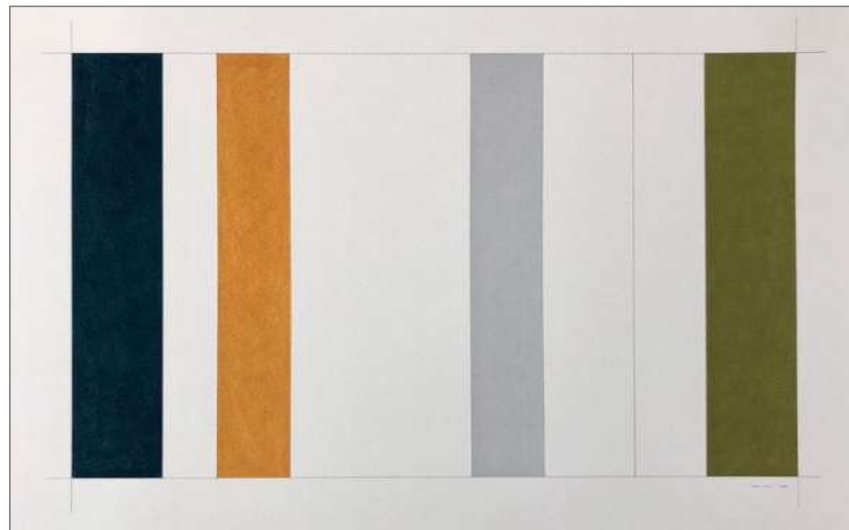
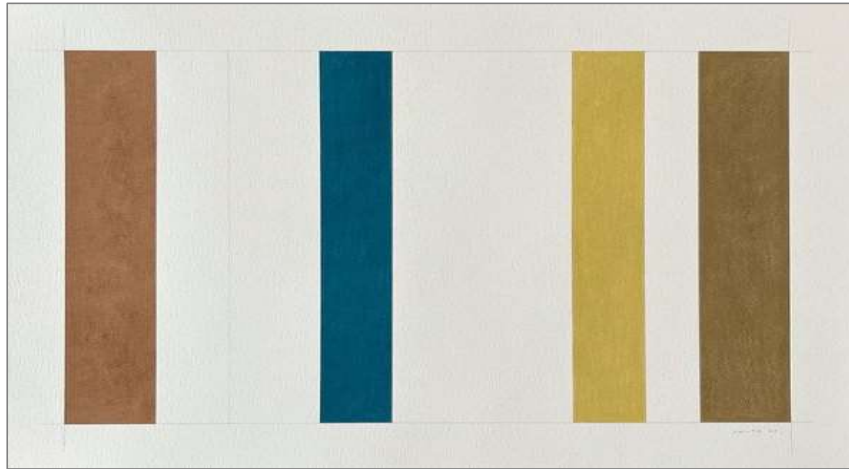
**Note:**  
Commission custom palette



\*For style only

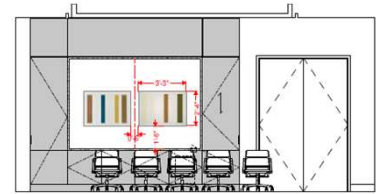


**Level 3  
Boardrooms**

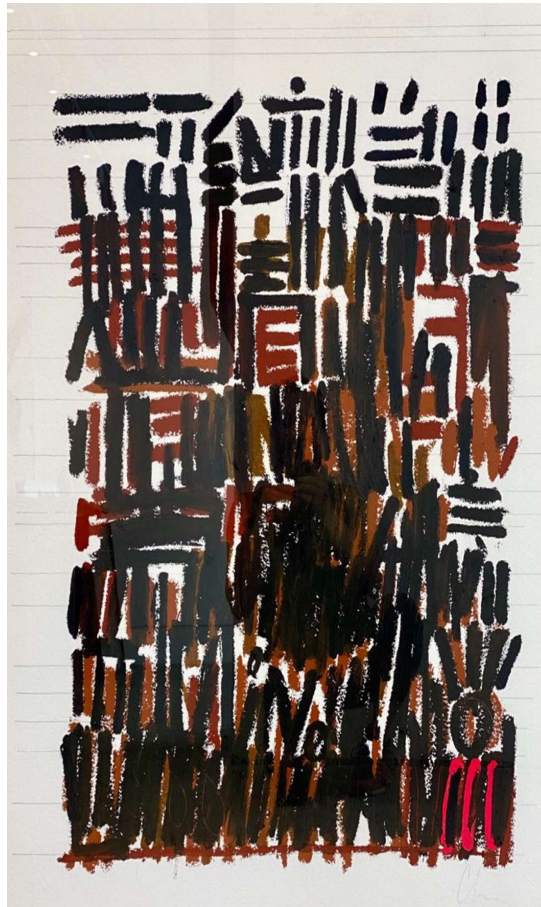


**Level 3**  
**Art @ Type II Boardroom**  
**BDR3-700A**

Artist: B Smith (Atlanta Artist)  
Title: Bar Code I & II  
Medium: pastel on paper  
Image Size: 18" h x 34" w  
Mat: Float on Cres White 5" all sides  
Frame: Black Frame 2" w  
Framed Size: 32" h x 48" w

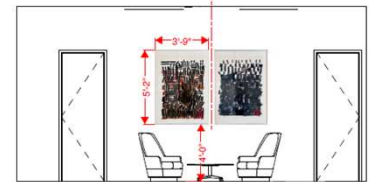
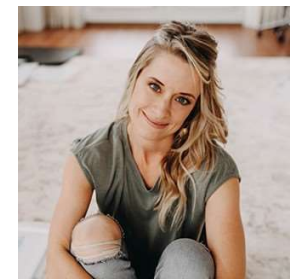


\*For style only



**Level 3**  
**Art @ Boardroom**  
**Prefunction**  
**BRD3-700-FF**

Artist: C Leach (GA Artist)  
Title: Hand Me Down  
Medium: oil and charcoal on paper  
Image Size: 50" h x 30" w  
Mat: 8 ply Cres White 3" all sides  
Frame: Black Frame 2" w  
Framed Size: 60" h x 40" w



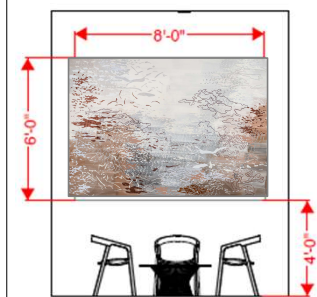
\*For style only



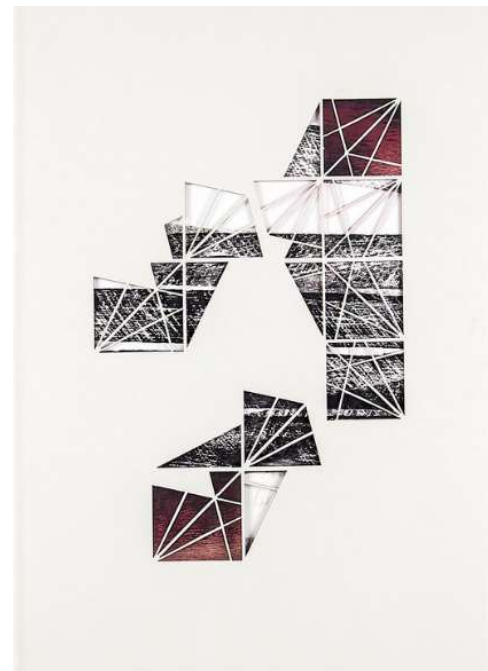
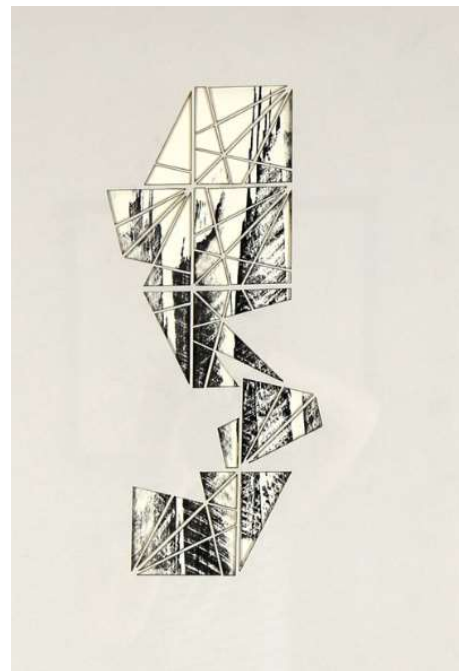


**Level 3**  
**Art @ Phone Room**  
**BRD3-700-GG**

Artist: L Fayer (Atlanta Artist)  
Title: Glass View  
Medium: mm print on canvas  
Image Size: 37" h x 49" w  
Frame: Black Floater Frame  
Framed Size: 38" h x 50" w



\*For style only



## Level 3 Art @ Phone Booths BRD3-700-HH

Artist: S Burns (Atlanta Artist)

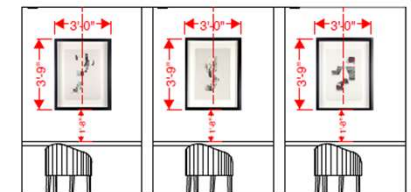
Title: Insula Series

Medium: laser cut paper over  
screen print

Image Size: 24" h x 16" w

Mat: Float on Cres White Frame:  
Black Frame 2" w

Framed Size: 36" h x 30" w



\*For style only

# FAULKNER+LOCKE



custom printed book sets with Atlanta imagery



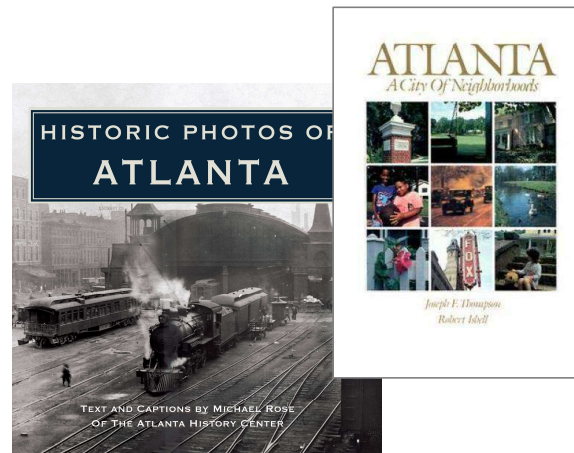
bookends with burnt wood in resin



objects with architectural interest



Hand turned wood by Local Artists



Atlanta Related Hardback Books



Local Ceramics

## Level 3 Accessories @ Signature Boardroom BRD3-700-ACC

Artist: Various  
Title: Boardroom Accessories  
Medium: various  
Size: various

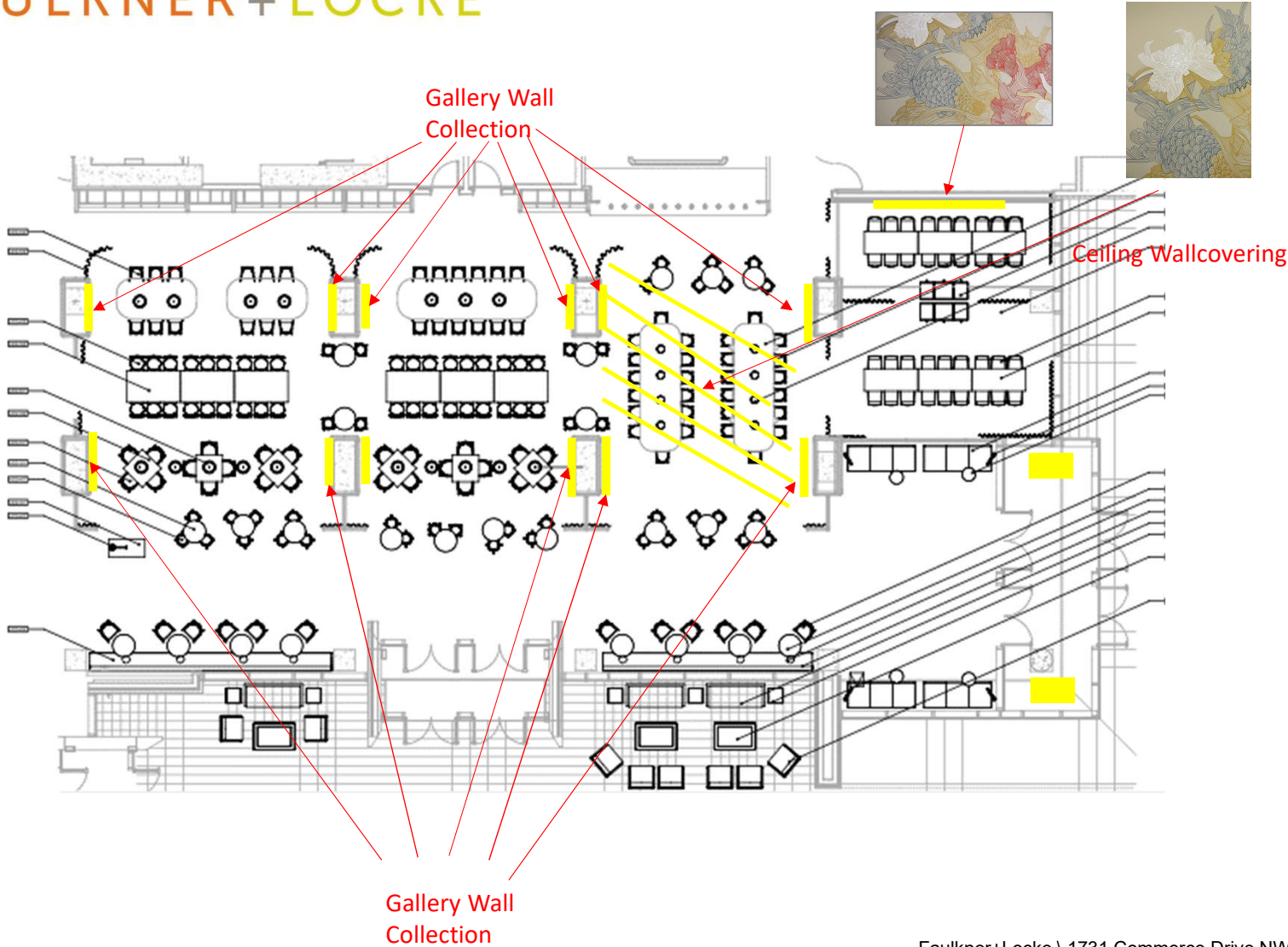
**Note:**  
Accessories and small sculptural items for shelving.

\*For style only



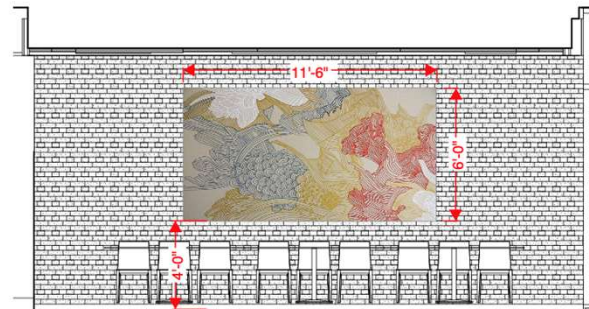
LEVEL 04 AMENITY  
*all day dining*





**Level 4  
All Day Dining**

\*For style only



KK | ALL DAY DINING

LL | ALL DAY DINING CEILING WALLCOVERING INSET APPROX 16'-0" W x 18'-0" L

## Level 4

### Art @ Private Dining Signature Restaurant TMR-700-KK

Artist: L Kusaite  
Title: Endless Forest 3  
Medium: mixed media print  
Image Size: 71" h x 137" w  
Frame: Black Floater  
Framed Size: 72" h x 138" w



\*For style only



***Note: Install print on ceiling as Shown above.***

**Level 4**  
**Art @ Ceiling Private**  
**Dining Signature**  
**Restaurant**  
**TMR-700-LL**

Artist: L Kusaite  
Title: Endless Forest 2  
Medium: "Mystical" type 2 vinyl wallcovering  
Overall Size: 216" h x 192" w  
Note: VIF by contractor

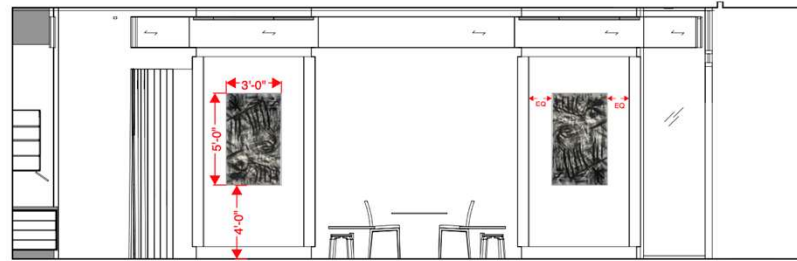


\*For style only



J-CABLE ROD

WALL MOUNTED RAIL



JJ | ALL DAY DINING COLUMN TYP  
TYPICAL SIZE FOR ARTWORK AT COLUMNS

**Level 4**  
**Art @ Gallery Wall**  
**Columns Three Meal**  
**Restaurant**  
**TMR-700-JJ-1AB**

Artist: V Walker (ATL Artist)  
Title: Twisting Studies  
Medium: ink and acrylic on paper and wood  
Image Size: 32" h x 22" w  
Mat: 8 Ply Cres White 5" all sides  
Frame: Black Frame 2" w  
Framed Size: 46" h x 36" w  
Note: To be hung on J Cable Rod



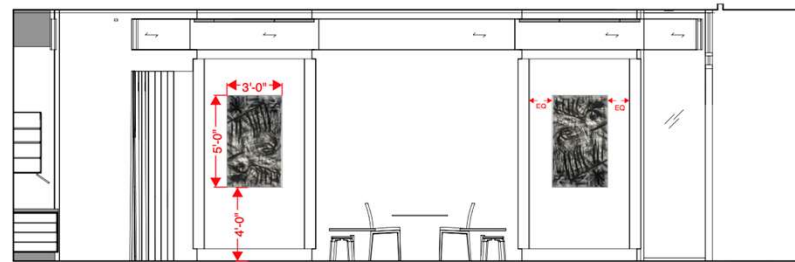
\*For style only





J-CABLE ROD

WALL MOUNTED RAIL



JJ | ALL DAY DINING COLUMN TYP  
TYPICAL SIZE FOR ARTWORK AT COLUMNS

**Level 4**  
**Art @ Gallery Wall**  
**Columns Three Meal**  
**Restaurant**  
**TMR-700-JJ-2AB**

Artist: L Bell (Atlanta Artist)  
 Title: Lovely Acts 1  
 Lovely Acts 2  
 Medium: mixed media on paper  
 Image Size: 32" h x 22" w  
 Mat: 8 Ply Cres White 5" all sides  
 Frame: Black Frame 2" w  
 Framed Size: 46"h x 36" w  
 Note: To be hung on J Cable Rod



\*For style only

# FAULKNER+LOCKE



## J-CABLE ROD

WALL MOUNTED RAIL



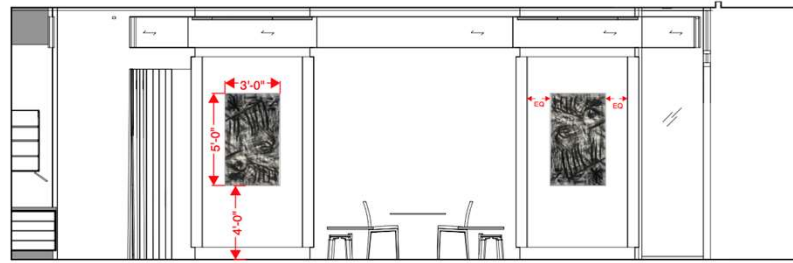
PICTURE RAIL



J-CABLE ROD



CABLE HOOK



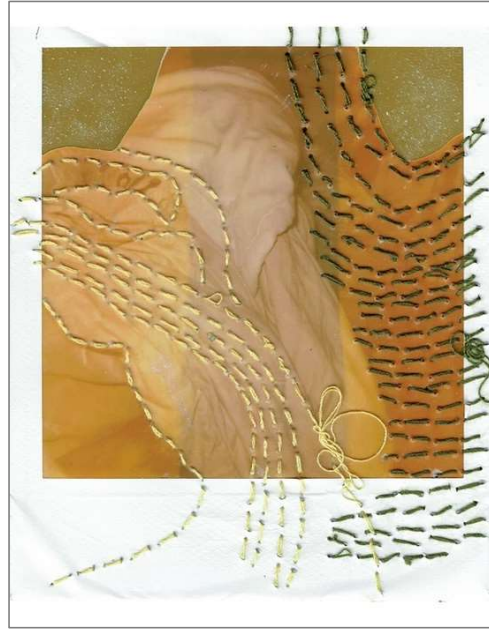
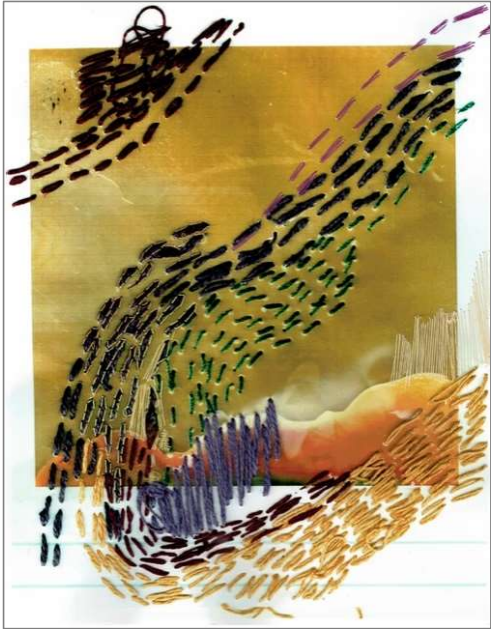
JJ | ALL DAY DINING COLUMN TYP  
TYPICAL SIZE FOR ARTWORK AT COLUMNS

## Level 4 Art @ Gallery Wall Columns Three Meal Restaurant TMR-700-JJ-3AB

Artist: E Palovick (Atlanta Artist)  
Title: My Earth 1-3  
Medium: mixed media on paper  
Image Size: 32" h x 22" w  
Mat: 8 Ply Cres White 5" all sides  
Frame: Black Frame 2" w  
Framed Size: 46"h x 36"w  
Note: To be hung on J Cable Rod



\*For style only



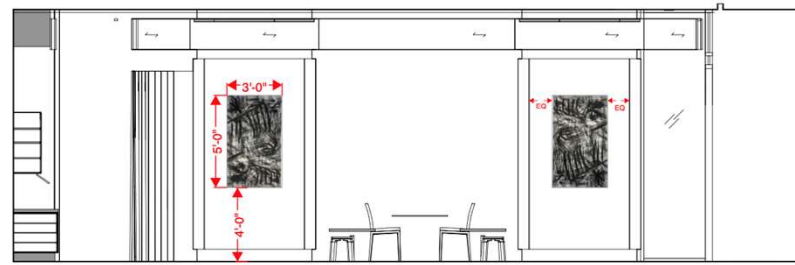
J-CABLE ROD

WALL MOUNTED RAIL

1 PICTURE RAIL

2 J-CABLE ROD

3 CABLE HOOK



JJ | ALL DAY DINING COLUMN TYP  
TYPICAL SIZE FOR ARTWORK AT COLUMNS

**Level 4**  
**Art @ Gallery Wall**  
**Columns Three Meal**  
**Restaurant**  
**TMR-700-JJ-4AB**

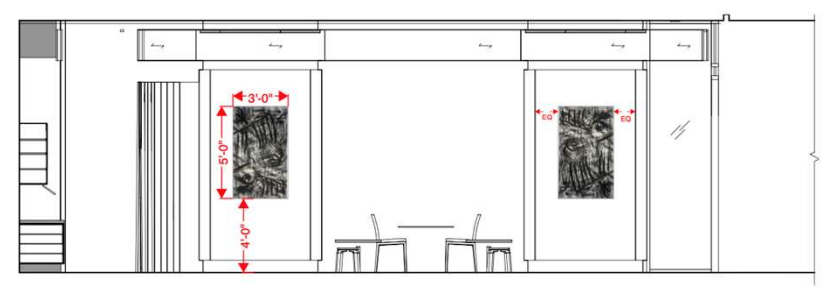
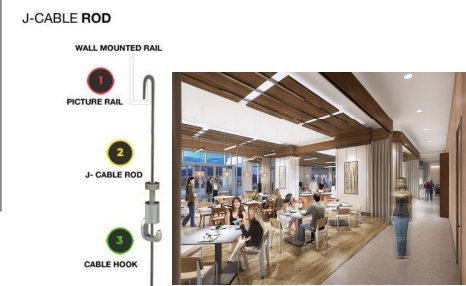
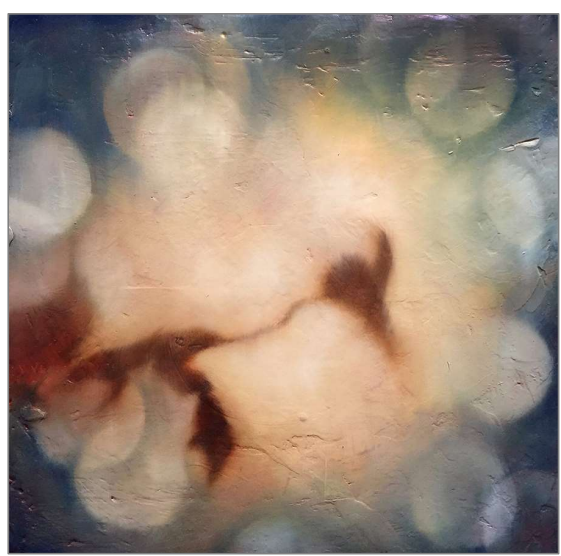
Artist: S Daniel (Atlanta Artist)  
Title: Iterations 2  
Medium: large scale print from embroidered polaroid  
Image Size: 32" h x 22" w  
Mat: 8 Ply Cres White 5" all sides  
Frame: Black Frame 2" w  
Framed Size: 46"h x 36"w  
Note: To be hung on J Cable Rod



\*For style only

**Level 4**  
**Art @ Gallery Wall**  
**Columns Three Meal**  
**Restaurant**  
**TMR-700-JJ-5AB**

Artist: C Linstrum (Atlanta Artist)  
 Title: Burst 1 and 2  
 Medium: mixed media on paper  
 Image Size: 32" h x 22" w  
 Mat: 8 Ply Cres White 5" all sides  
 Frame: Black Frame 2" w  
 Framed Size: 46"h x 36" w  
 Note: To be hung on J Cable Rod



JJ | ALL DAY DINING COLUMN TYP  
 TYPICAL SIZE FOR ARTWORK AT COLUMNS



\*For style only



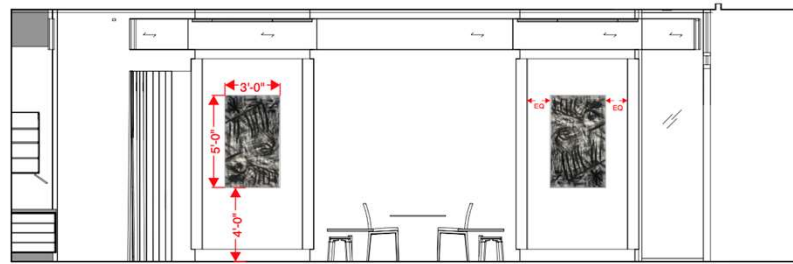
J-CABLE ROD

WALL MOUNTED RAIL

1 PICTURE RAIL

2 J-CABLE ROD

3 CABLE HOOK



JJ | ALL DAY DINING COLUMN TYP  
TYPICAL SIZE FOR ARTWORK AT COLUMNS

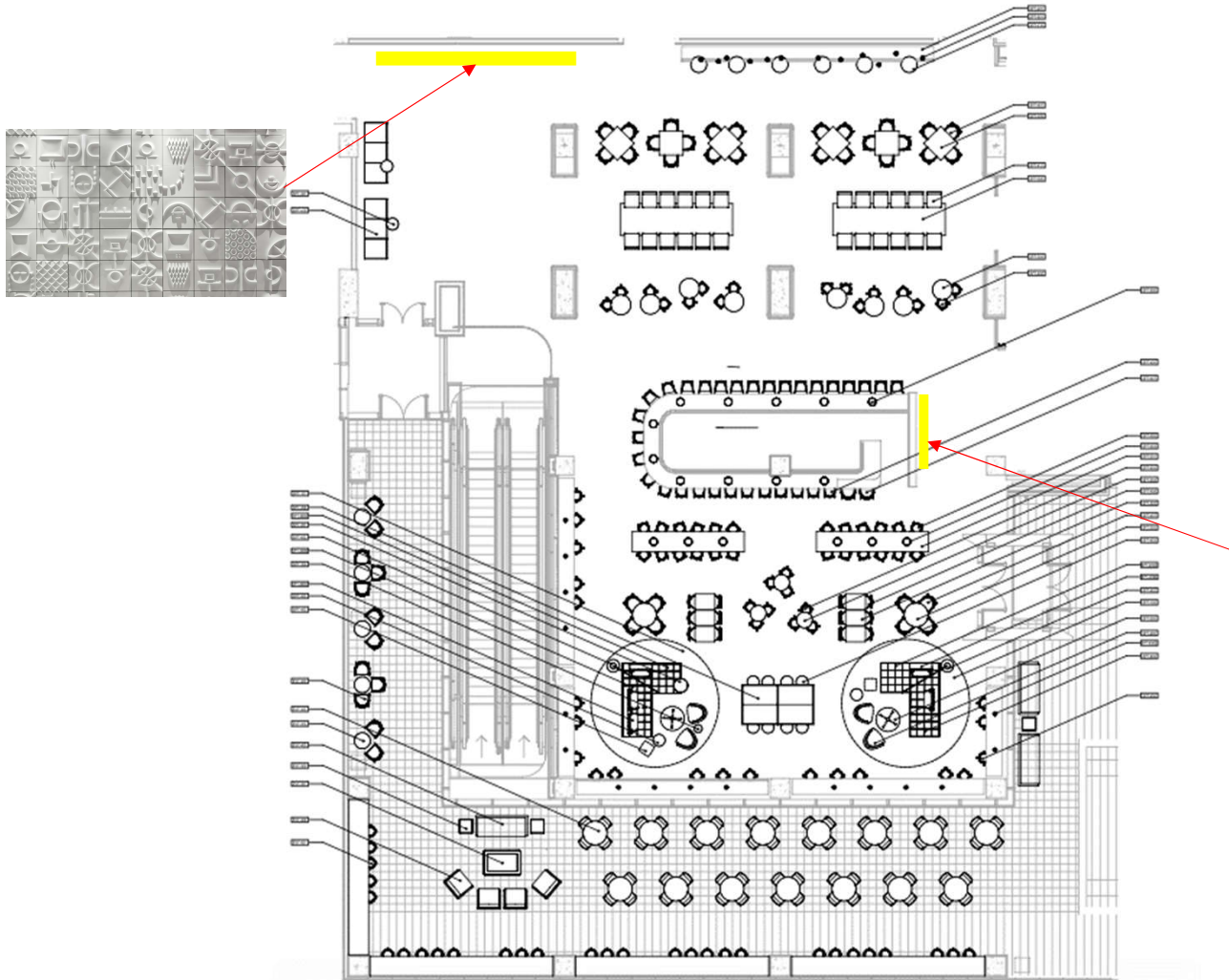
**Level 4**  
**Art @ Gallery Wall**  
**Columns Three Meal**  
**Restaurant**  
**TMR-700-JJ-6AB**

Artist: C Mastin (Atlanta Artist)  
Title: Of Southern Gardens  
Series  
Medium: photography on paper  
Image Size: 32" h x 22" w  
Mat: 8 Ply Cres White 5" all sides  
Frame: Black Frame 2" w  
Framed Size: 46"h x 36"w  
Note: To be hung on J Cable Rod



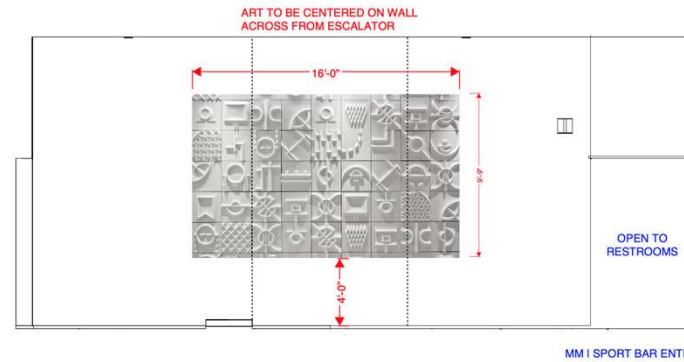
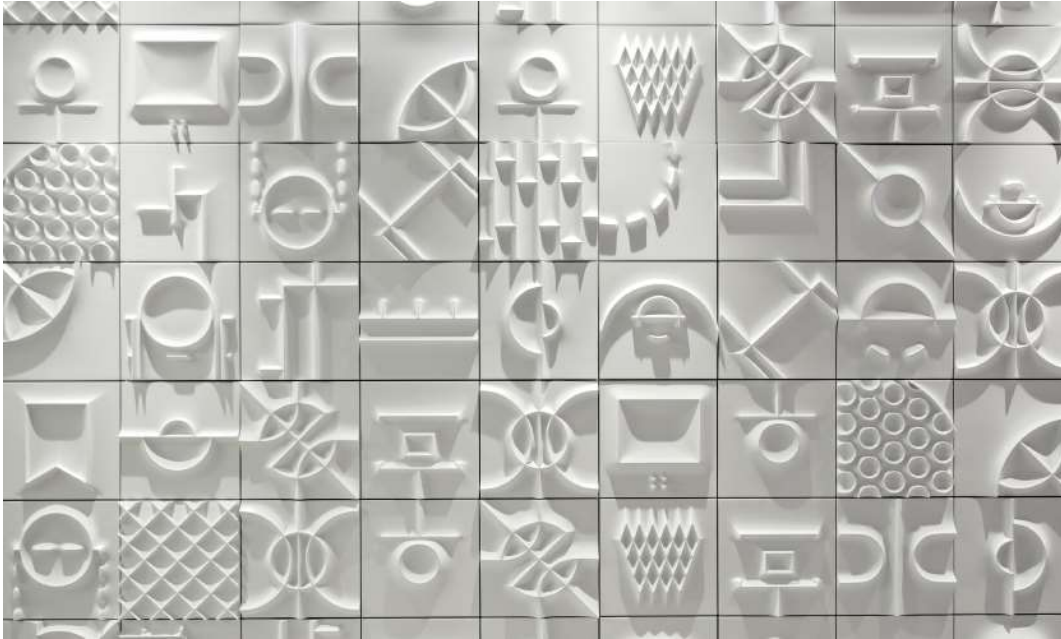
\*For style only

# FAULKNER+LOCKE



## Level 4 Sports Bar

\*For style only



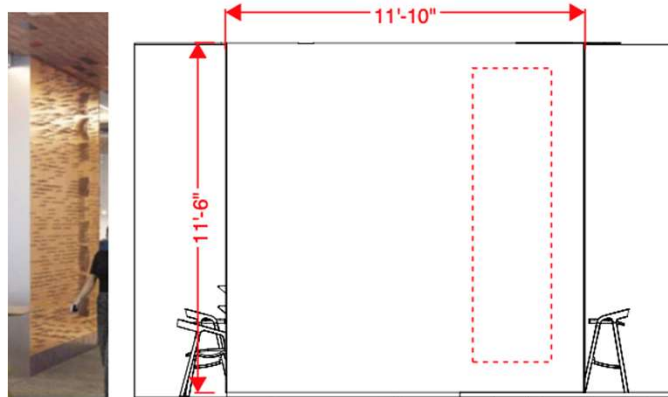
**Level 4**  
**Art @ Sports Bar Back**  
**Wall**  
**SPT-700-MM**

Artist: RG  
Title: Icon Wall  
Medium: mixed media  
on wood  
Image Size: 12" x 12" w approx. each  
Overall Size: 117" h x 192" w

\*For style only



Name of Bar



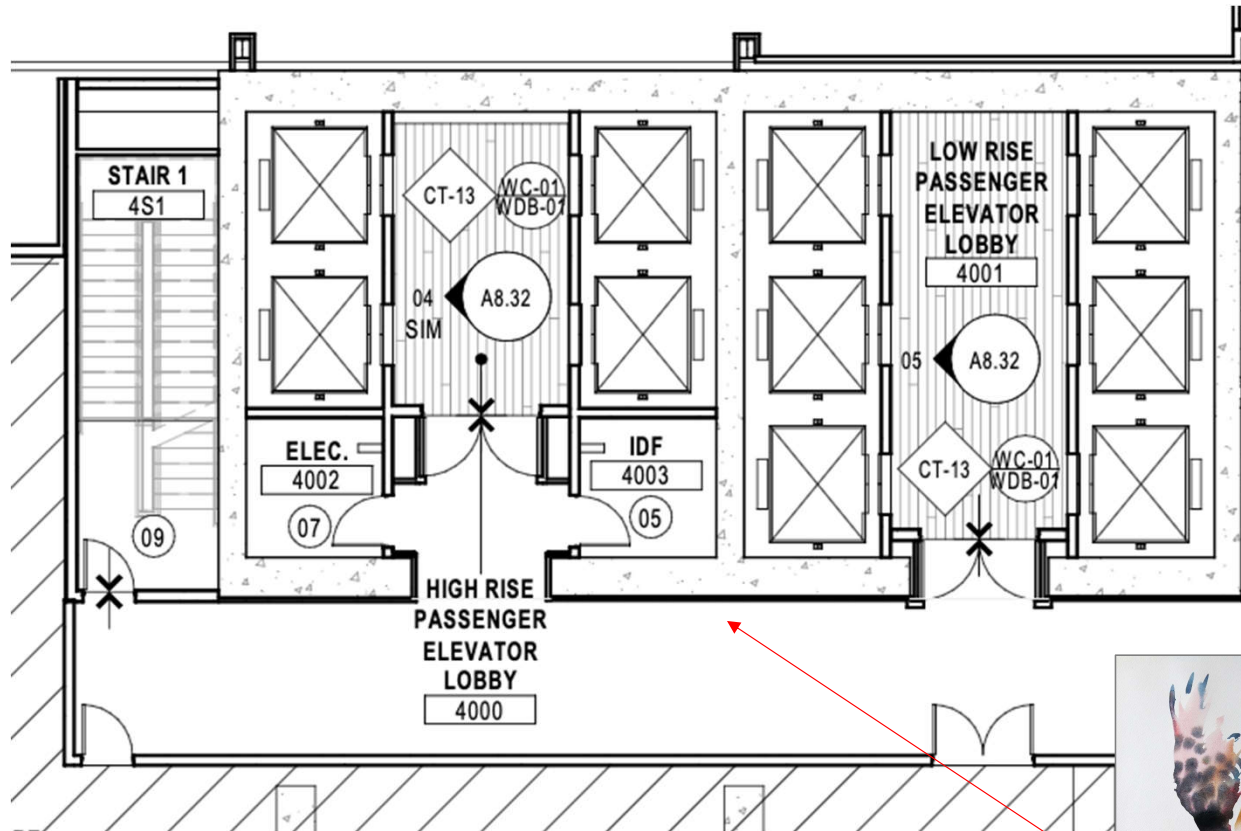
NN | SPORT BAR  
OVERALL FEATURE WALL DIMENSIONS INDICATED, SPORTS  
BAR LETTERING OUTLINED IN RED

## Level 4 Art @ Sports Bar Entry SPT-700-NN

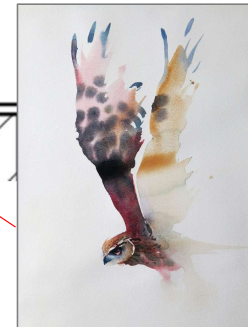
Artist: RT  
Title: Bar Signage  
Medium: brass pegs on peg board  
Wordage Size: 126" h x 24" w  
Overall Size: 138" h x 132" w

\*For style only

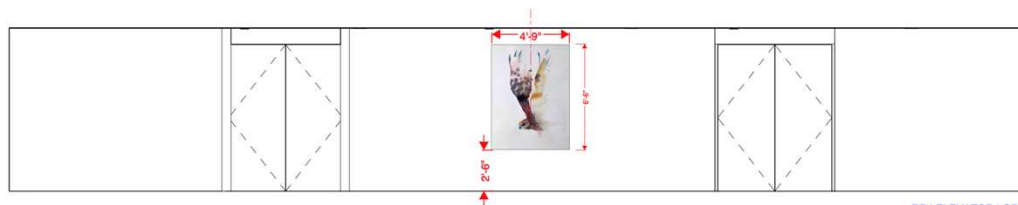




## Level 4 Elevator Lobby



\*For style only



RR | ELEVATOR LOBBY

**Level 4**  
**Art @ Elevator Lobby**  
**SIG-700-RR**

Artist: T Lytton (Atlanta Artist)  
Title: Diving Falcon  
Medium: mixed media on canvas  
Image Size: 59" h x 47" w  
Frame: Black Floater  
Framed Size: 60" h x 48" w

\*For style only

# Lobby Level 5 – Spa/Pool Deck/Fitness

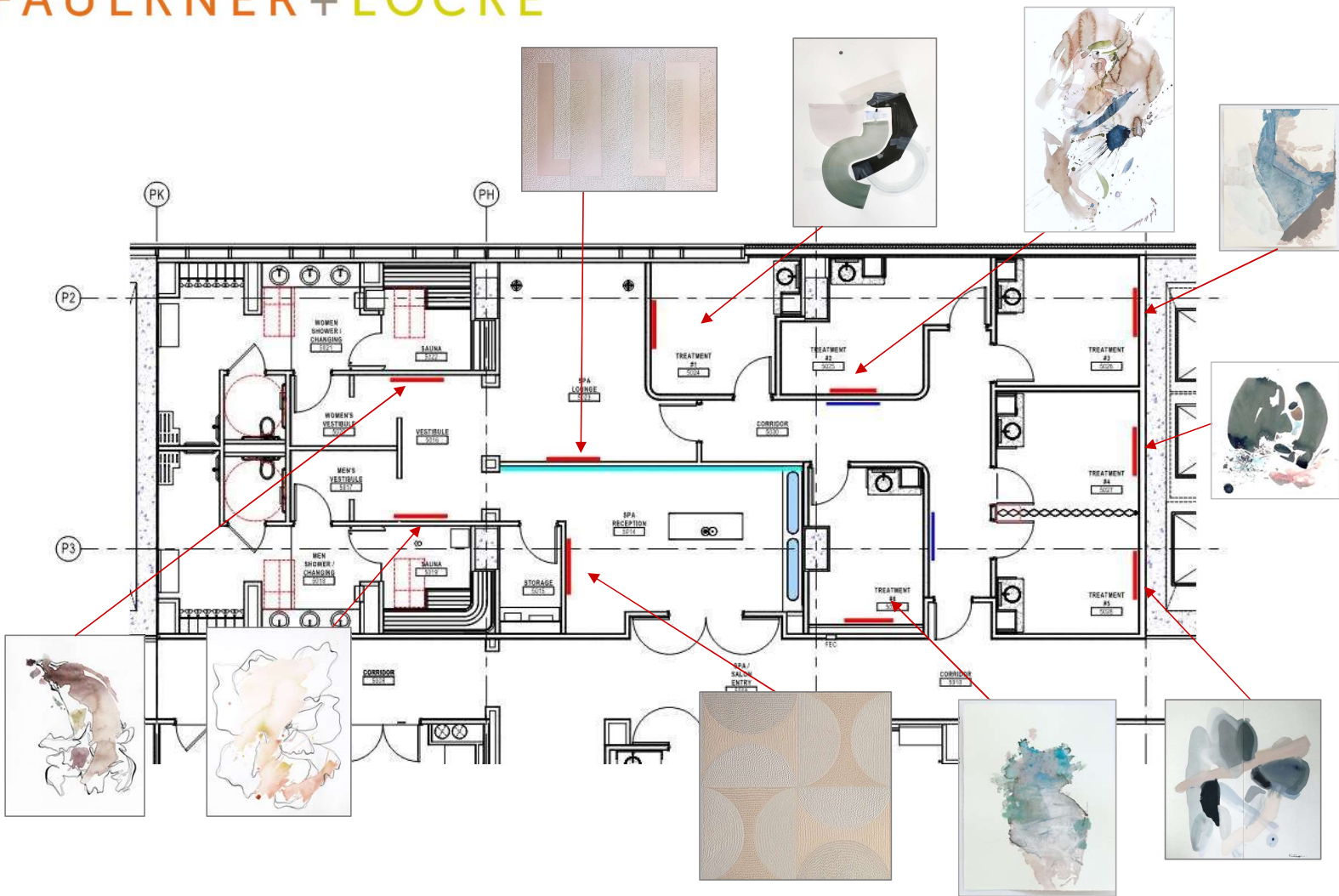
---

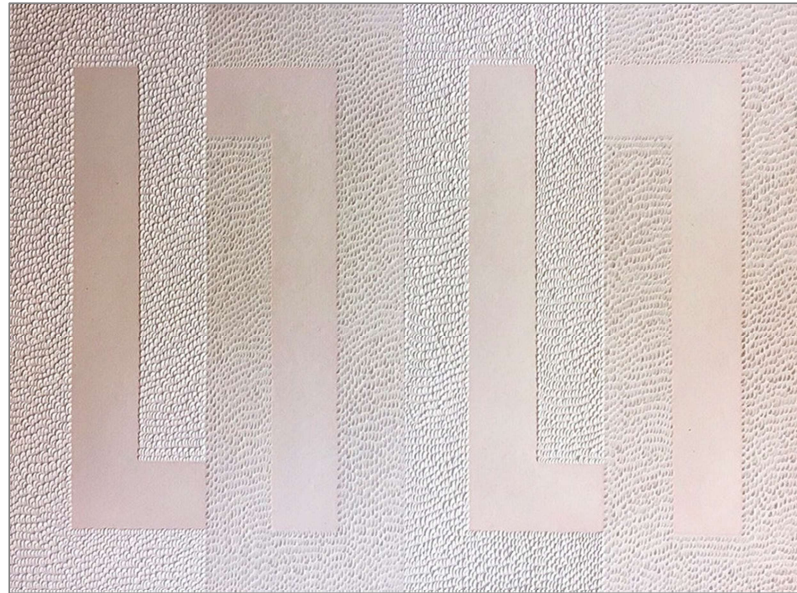
FAULKNER+LOCKE



SPA + SALON + FITNESS  
*finishes*

## Level 5 Spa





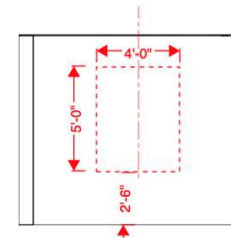
**Level 5**  
**Art @ Spa Reception**  
**PLD-700-SS**

Artist: L Rodriguez (Atlanta Artist)  
Title: Semi-Circles  
Medium: manipulated paper and watercolor  
Image Size: 40" h x 40" w  
Mat: 8 ply Cres White 5" all sides  
Frame: White Frame 2" w  
Framed Size: 54" h x 54" w

**Note:**  
36" h from the floor



\*For style only



**Level 5**  
**Art @ Spa Treatment**  
**Room**  
**PLD-700-WW-1**

Artist: E Palovick (Atlanta Artist)  
Title: Softer Still Series  
Medium: mixed media on paper  
Image Size: 22" h x 16" w  
Mat: 8 ply Cres White 5" all sides  
Frame: White Frame 2" w  
Framed Size: 36" h x 30" w

**Note:**  
30" h from the floor



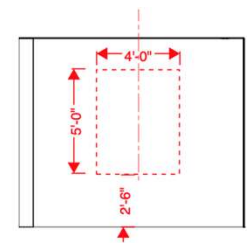
\*For style only



**Level 5**  
**Art @ Spa Treatment**  
**Room**  
**PLD-700-WW-3**

Artist: KG (Atlanta Artist)  
Title: Konfine  
Medium: watercolor on paper  
Image Size: 22" h x 16" w  
Mat: 8 ply Cres White 5" all sides  
Frame: White Frame 2" w  
Framed Size: 36" h x 30" w

**Note:**  
30" h from the floor



\*For style only

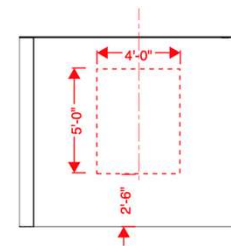




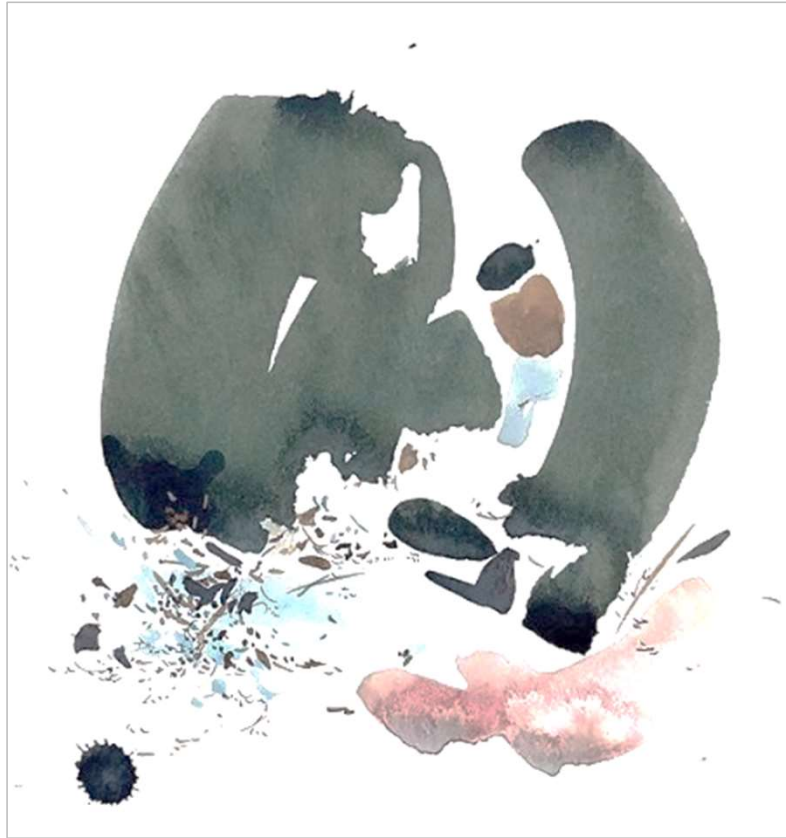
**Level 5**  
**Art @ Spa Treatment**  
**Room**  
**PLD-700-WW-5**

Artist: C Kwan (Atlanta Artist)  
Title: Spot Series  
Medium: watercolor on paper  
Image Size: 22" h x 16" w  
Mat: 8 ply Cres White 5" all sides  
Frame: White Frame 2" w  
Framed Size: 36" h x 30" w

**Note:**  
30" h from the floor



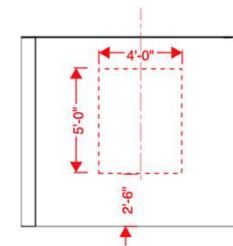
\*For style only



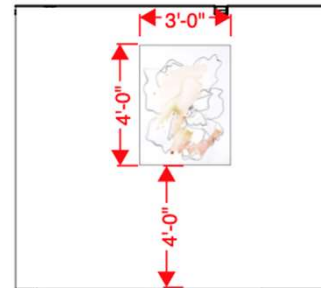
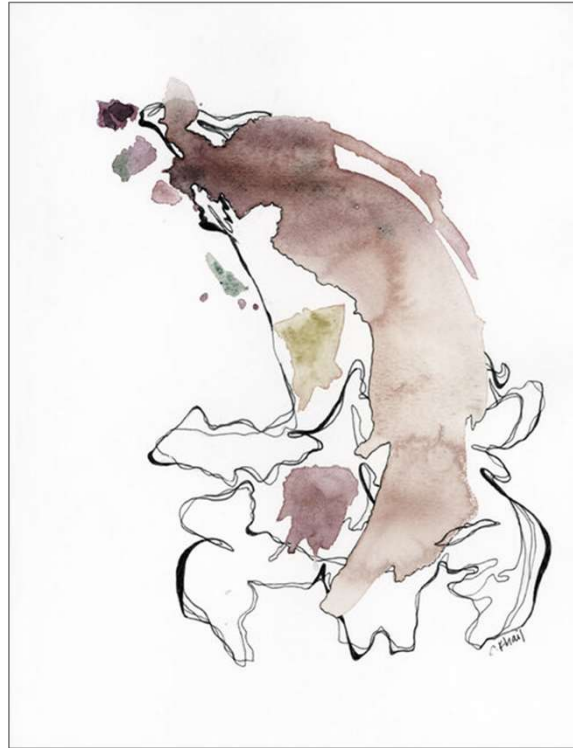
**Level 5**  
**Art @ Spa Treatment**  
**Room**  
**PLD-700-WW-6**

Artist: C Kwan (Atlanta Artist)  
Title: Spot Series  
Medium: watercolor on paper  
Image Size: 22" h x 16" w  
Mat: 8 ply Cres White 5" all sides  
Frame: White Frame 2" w  
Framed Size: 36" h x 30" w

**Note:**  
30" h from the floor



\*For style only



**Level 5**  
**Art @ Men's Restroom**  
**Vestibule Spa**  
**PLD-702-TT**

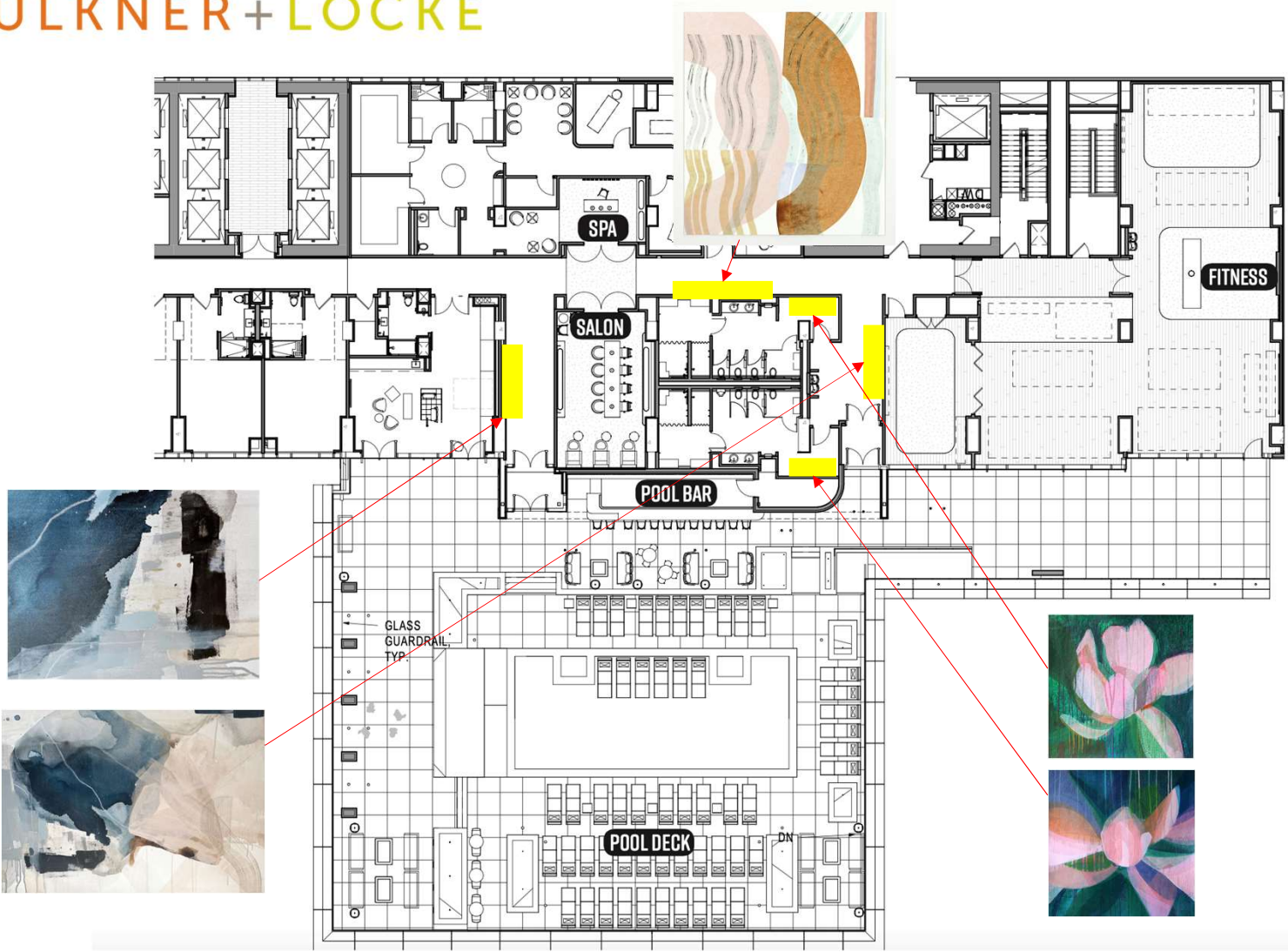
Artist: C Khail (Atlanta Artist)  
Title: Jorja  
Medium: mixed media print  
Image Size: 34" h x 22" w  
Mat: 8 ply Cres White 5" all sides  
Frame: White Frame 2" w  
Framed Size: 48" h x 36" w

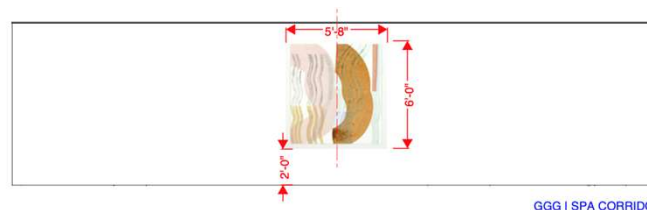
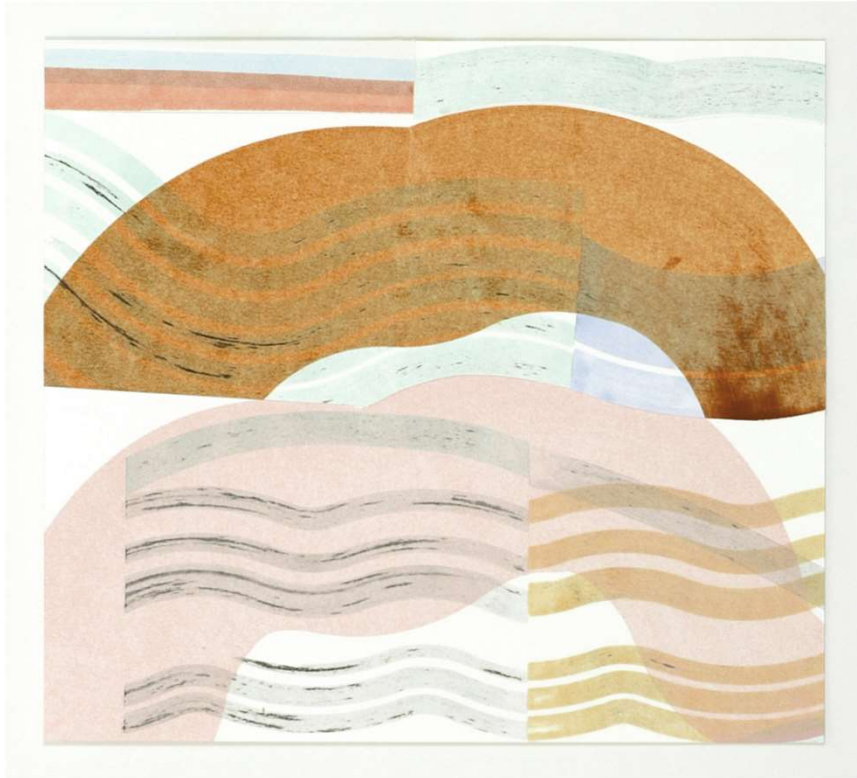
**Note:**  
48" h from the floor



\*For style only

Level 5  
Pool Deck





**Level 5**  
**Art @ Spa Corridor**  
**PLD-700-FF**

Artist: E Barthels  
Title: Sunroom Series  
Medium: mixed media on canvas  
Image Size: 39" h x 59" w  
Frame: White Floater  
Framed Size: 40" h x 60" w

**Note:**  
24" h from the floor



\*For style only

# FAULKNER+LOCKE

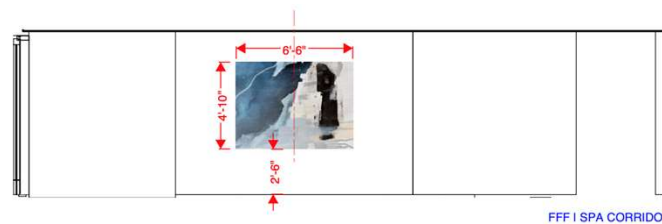


## Level 5 Art @ Spa Corridor PLD-700-FFF

Artist: M Heslop  
Title: A Little Closer Series  
Medium: mixed media on canvas  
Image Size: 39" h x 59" w

Frame: White Floater  
Framed Size: 40" h x 60" w

**Note:**  
30" h from the floor



\*For style only



**Level 5**  
**Art @ Spa Corridor**  
**PLD-700-HHH**

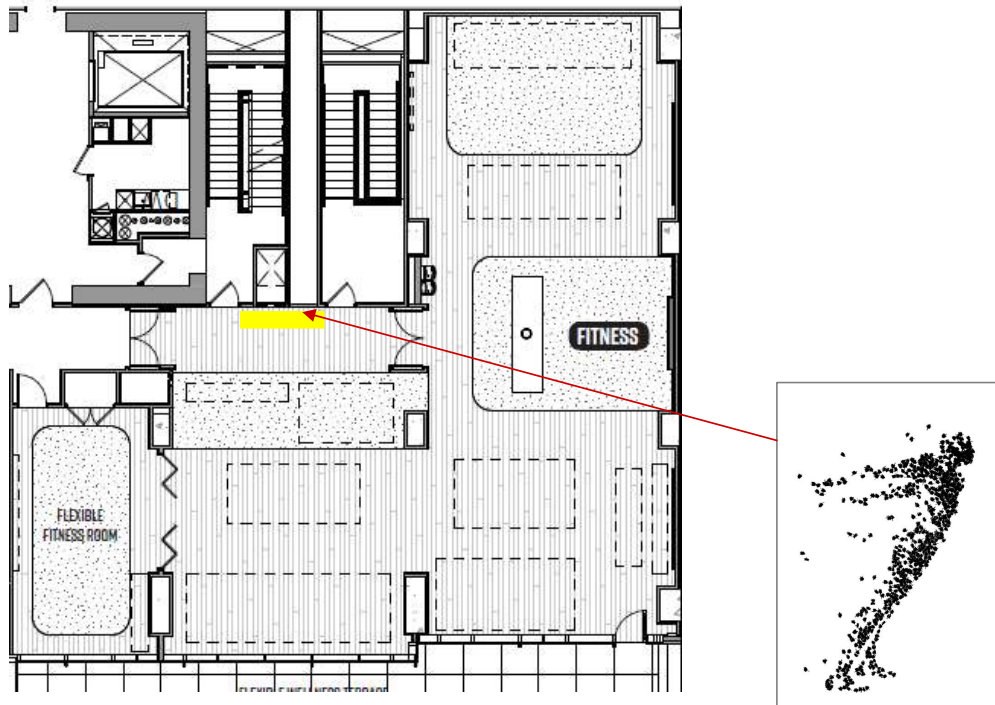
Artist: M Heslop  
Title: A Little Closer Series  
Medium: mixed media on canvas  
Image Size: 39" h x 59" w  
Frame: White Floater  
Framed Size: 40" h x 60" w

**Note:**  
30" h from the floor

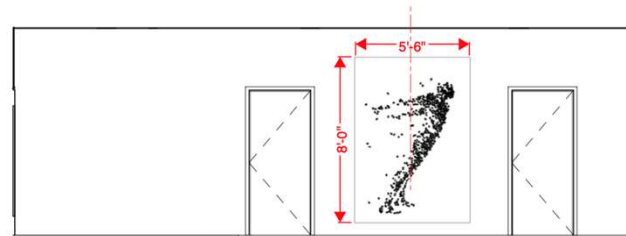


\*For style only

**Level 5**  
**Fitness Wellness**







CCC | FITNESS ENTRY

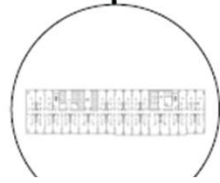
**Level 5**  
**Art @ Fitness Entry**  
FIT-702-CCC

Artist: R Awashton  
Title: Movement  
Medium: graphic on canvas  
Image Size: 95" h x 65" w  
Frame: Black Floater  
Framed Size: 96" h x 66" w

\*For style only

# GUESTROOMS TOWER

GUESTROOM ART STORY





**Guestrooms**  
**Art @ Typical King Entry**  
GRM-750

Artist: S Webb  
Title: Forgiveness II  
Medium: mixed media print on  
canvas  
Image Size: 29" h x 19" w  
Frame: OM 84093 Brushed Pewter  
Floater  
Framed Size: 30" h x 20" w

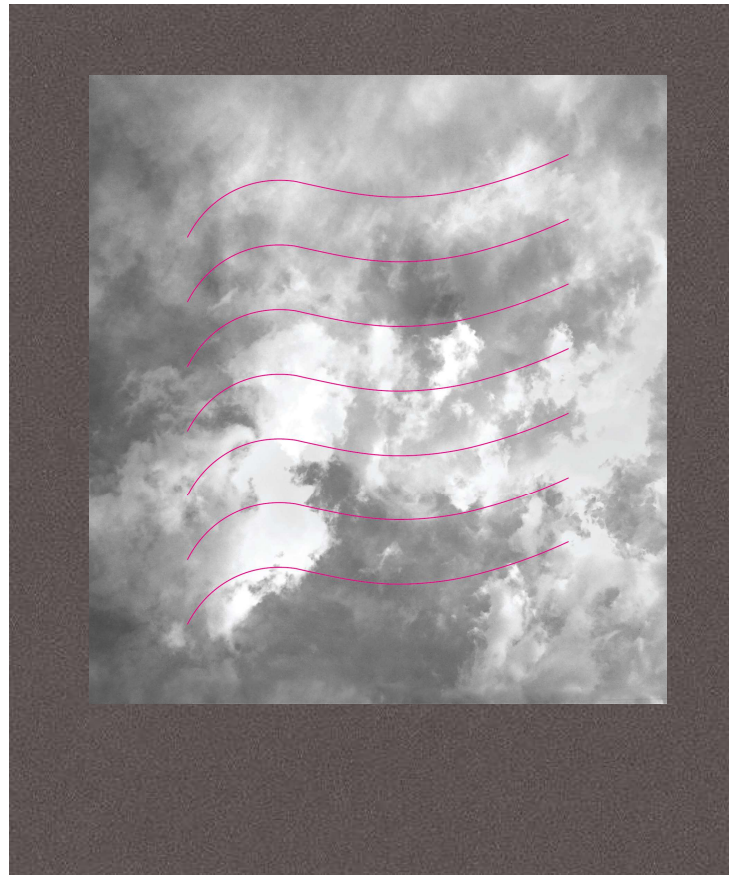
\*For style only



**Guestrooms**  
**Art @ Typical Queen Entry**  
GRM-751

Artist: H Newton  
Title: Light Play  
Medium: mixed media print on  
canvas  
Image Size: 29" h x 19" w  
Frame: OM 84093 Brushed Pewter  
Floater  
Framed Size: 30" h x 20" w

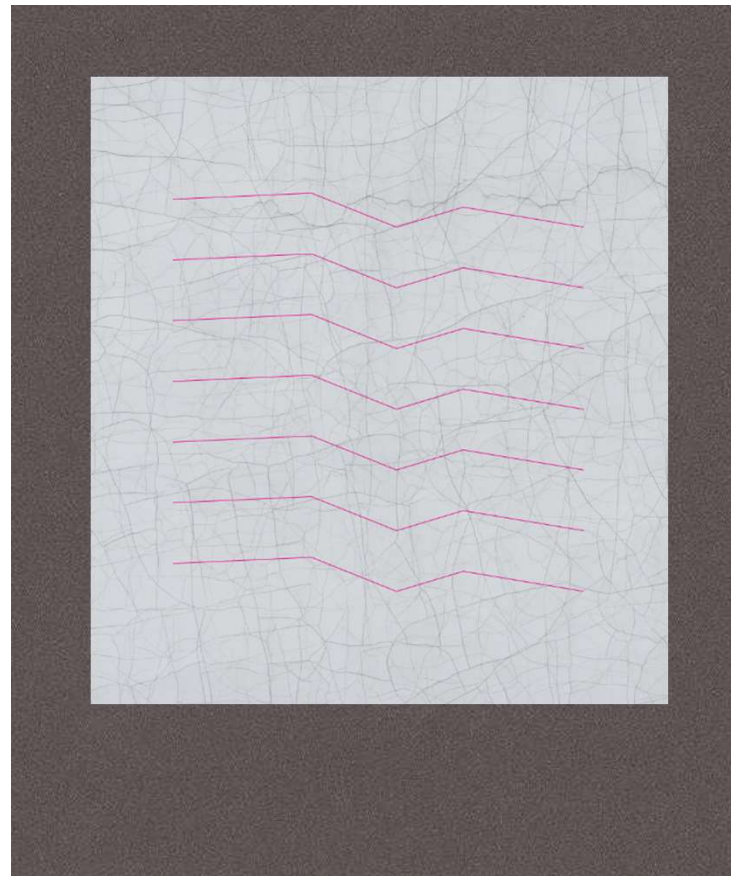
\*For style only



**Guestrooms**  
**Art @ Typical King**  
**Bathroom**  
**GRM-752**

Artist: KL  
Title: SE-NE 2  
Medium: cut paper  
Image Size: 25.25" h x 13.25" w  
Mat: Float on Cres New Castle  
1123 3" top & sides, 7"  
bottom  
Frame: MICH 423-33 Silver  
0.875" w  
Framed Size: 37" h x 31" w

\*For style only



**Guestrooms**  
**Art @ Typical Queen**  
**Bathroom**  
**GRM-753**

Artist: KL  
Title: SE-NE 2  
Medium: cut paper  
Image Size: 25.25" h x 13.25" w  
Mat: Float on Cres New Castle  
1123 3" top & sides, 7"  
bottom  
Frame: MICH 423-33 Silver  
0.875" w  
Framed Size: 37" h x 31" w

\*For style only



**Guestrooms**  
**Art @ Typical King**  
**Bedroom**  
**GRM-754**

Artist: CR  
Title: Midnight in the Garden  
Medium: mixed media print on  
canvas  
Image Size: 35" h x 30" w  
Frame: MICH 306-29 Satin Black  
Floater  
Framed Size: 36" h x 31" w

\*For style only



**Guestrooms**  
**Art @ Typical Queen**  
**Bedroom**  
**GRM-755**

Artist: CR  
Title: Lunch in Napa  
Medium: mixed media print on  
canvas  
Image Size: 35" h x 30" w  
Frame: MICH 306-29 Satin Black  
Floater  
Framed Size: 36" h x 31" w

\*For style only





**Guestrooms**  
**Statuette @ Shelving**  
**GRM-768**

Artist: TJ (Atlanta Artist)  
Title: Feather Vase  
Medium: ceramic  
Overall Size: 6" h x 6" w x 6" d

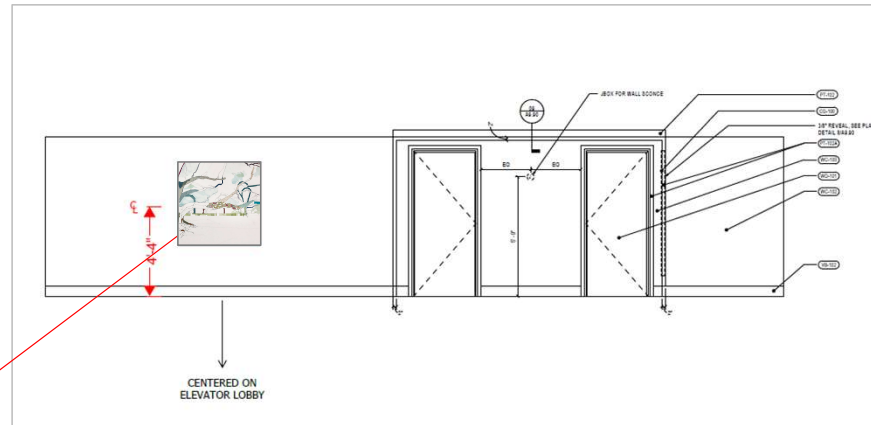
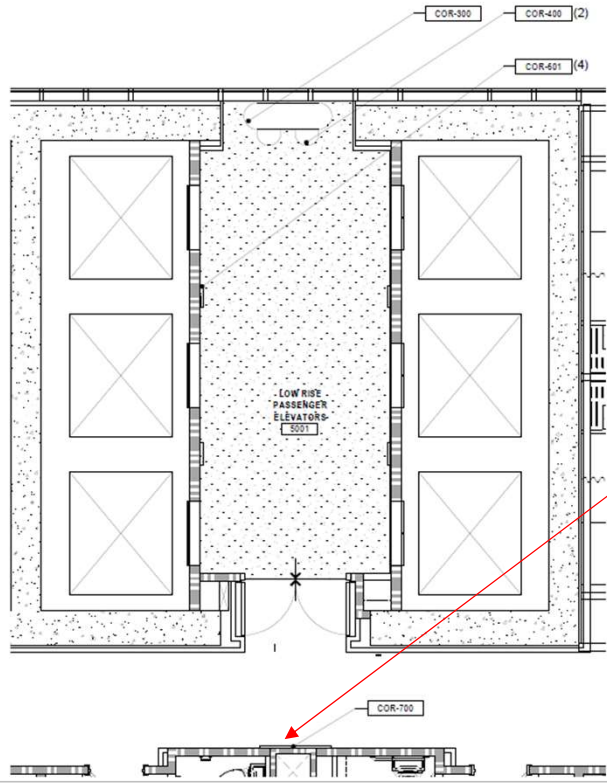
**Note:**  
Vase to have wider neck to accommodate  
flower design

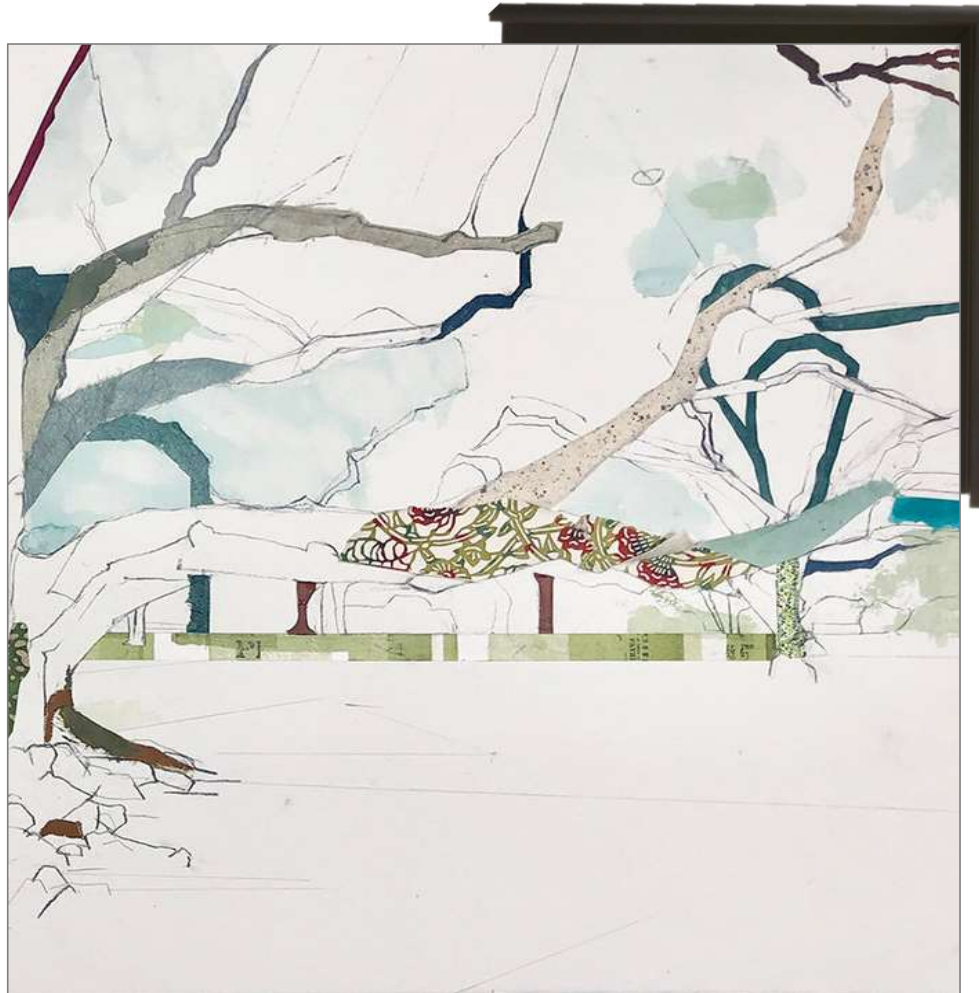
Magnolia leaf to be in gold

\*For style only

# Low Rise Elevator Lobby

LOW RISE ELEVATOR LOBBY - LEVEL 05

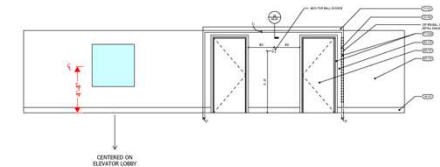




**Guest Corridors**  
**Art @ Low Rise Elevator**  
**COR-700**

Artist: J Lear  
Title: Oak I  
Medium: mixed media print on canvas  
Image Size: 47" h x 47" w  
Frame: MICH 306-29 Satin Black Floater  
Framed Size: 48" h x 48" w  
Qty: 33

**Note:**  
F+L to commission artist to create a diptych – for those double elevator lobbies.



\*For style only

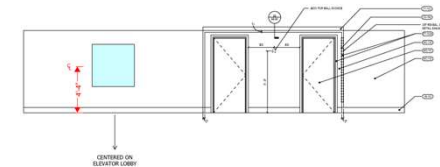


**Guest Corridors**  
**Art @ High Rise Elevator**  
**COR-701**

Artist: J Lear  
Title: Oak II  
Medium: mixed media print on canvas  
Image Size: 47" h x 47" w  
Frame: MICH 306-29 Satin Black Floater  
Framed Size: 48" h x 48" w  
Qty: 1

**Note:**

F+L to commission artist to create a diptych – for those double elevator lobbies.



\*For style only

AUTHORITY

# **Signia by Hilton Atlanta: Meeting Room Identification**

**Jennifer LeMaster**  
**Chief Administrative Officer**

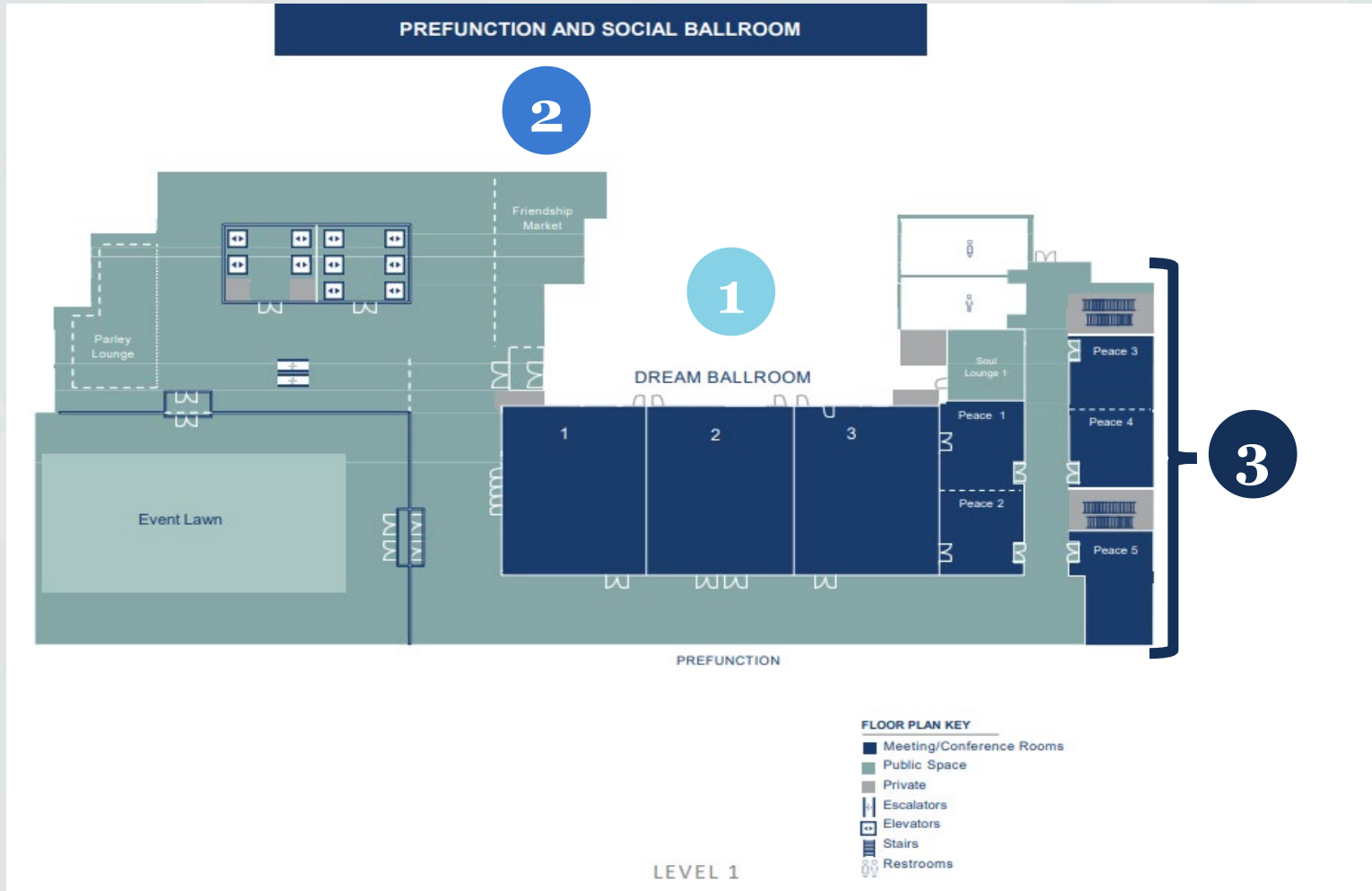
# Holistic Design Narrative Implementation

AUTHORITY

- **Historic Context:** what is most relevant to GWCCA
- **Physical Context:** where the hotel site is in relation to current and former neighborhoods
- **Social Context:** “Atlanta Spirit” civic boosterism and vision + business interests (whatever was good for business was good for Atlanta and Atlantans, ie. tourism, sports, and the arts)
- **Southern Hospitality:** Taste, Smell, Feel, See, Sound

# Level 1: Prefunction & Social Ballroom

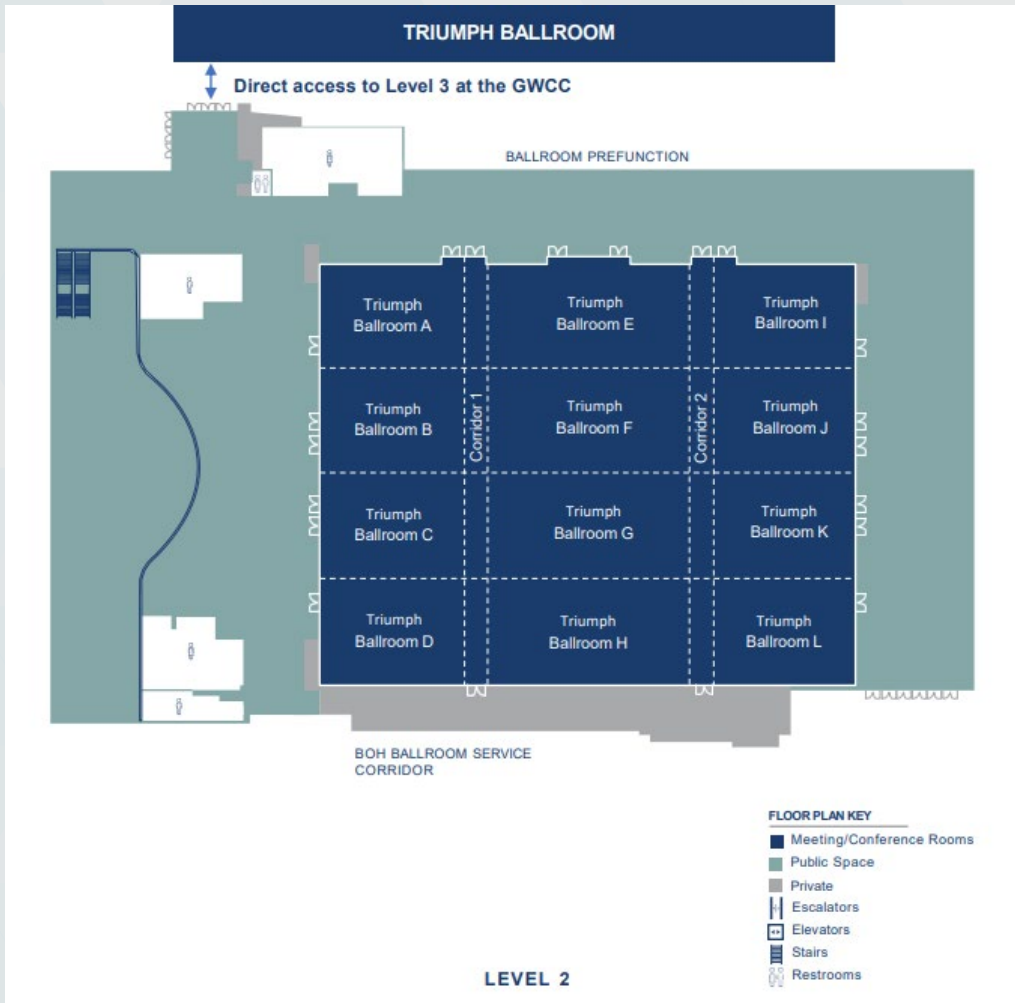
AUTHORITY



- 1** Dream Ballroom
- 2** Friendship Market
- 3** Peace Meeting Rooms

# Level 2: Grand Ballroom

AUTHORITY



Triumph Ballroom



# Level 3: Meeting Rooms & Boardrooms

AUTHORITY



- 1 Lightening Boardroom
- 2 Mt. Vernon Boardroom
- 3 Washington Park Boardroom
- 4 Magnificent Meeting Rooms & Lounge

# Level 4: Sports Bar, Lounge & Signature Restaurant

AUTHORITY



- 1 Signature Restaurant (TBD)
- 2 The Nest (Sports Bar)
- 3 Pivot South Restaurant (All-Day Dining)

# Level 5: Pool Bar, Spa & Fitness Center

AUTHORITY

## GUESTROOMS AND AMENITY



GUESTROOMS

1

3

2

POOL DECK

LEVEL 5

### FLOOR PLAN KEY

- Meeting/Conference Rooms
- Public Space
- Private
- Escalators
- Elevators
- Stairs
- Restrooms

1

Honey Glow Spa & Beauty Bar

2

Atlantic Pool Bar

3

Olympic Fitness Center

Questions?

GOVERNMENT

# 2022 Legislative Session Update

---

**Lindsay Strickland**  
**Director of Government Relations**

# Legislative Session Update

AUTHORITY

- State Budget
- Notable Legislation
- Special Recognition
- Legislative Overview Committee
- Questions

# 2022 Legislative Budget Review

GOVERNMENT

- AFY22: **\$28.8M** – Roof replacement (direct appropriation)
  - Governor: SIGNED
  - GSFIC: received week of April 11

# Notable Legislation

- **HB 911:** FY23 State Budget – PASSED
- **SB 379:** State Apprenticeship Programs – PASSED
- **HB 1034:** Tax Exemption for non-reoccurring major sporting events – PASSED
- **HB 1013:** Mental Health Parity Act – PASSED



# Special Recognition

GOVERNMENT



**Rep. Terry England**  
House Appropriations  
Committee Chairman



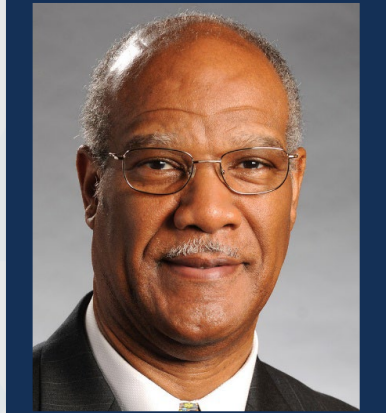
**Sen. Bruce Thompson**  
Senate Economic  
Development Chairman



**Sen. Jeff Mullis**  
Senate Rules  
Committee Chairman



**Sen. Butch Miller**  
Senate President Pro Tem



**Rep. Calvin Smyre**  
Dean of the  
House of Representatives

# Legislative Overview Committee

GOVERNMENT

## House Members

Rep. Chris Erwin  
Rep. Jan Jones  
Rep. Butch Parrish  
Rep. Calvin Smyre  
Rep. Ron Stephens  
(*vacant seat*)

## Senate Members

Sen. Butch Miller (*retiring*)  
Sen. Brandon Beach  
Sen. Harold Jones  
Sen. Jeff Mullis (*retiring*)  
Sen. Bruce Thompson  
(*retiring*)  
Sen. Larry Walker

## Special Thanks

House Appropriations Chairman  
**Terry England**  
House Sub-Committee Chairman  
**Penny Houston**  
Senate Appropriations Chairman  
**Blake Tillery**

Questions?

AUTHORITY

# Next Scheduled Meeting

---

**May 24, 2022**